

ELONEX

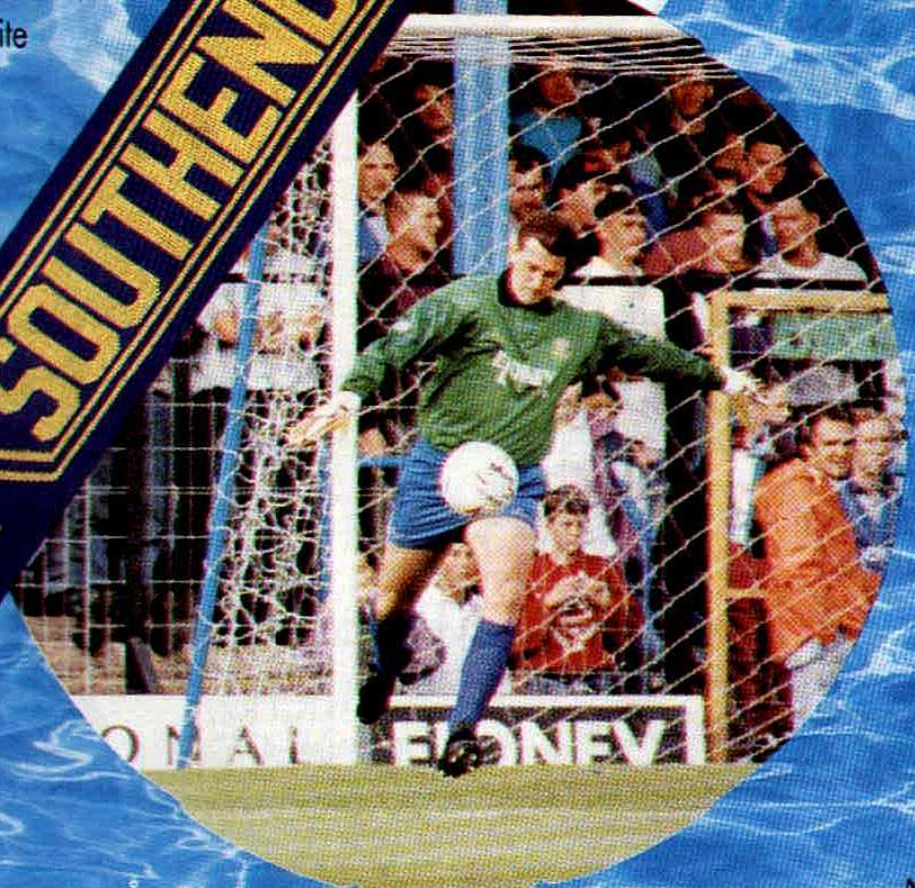
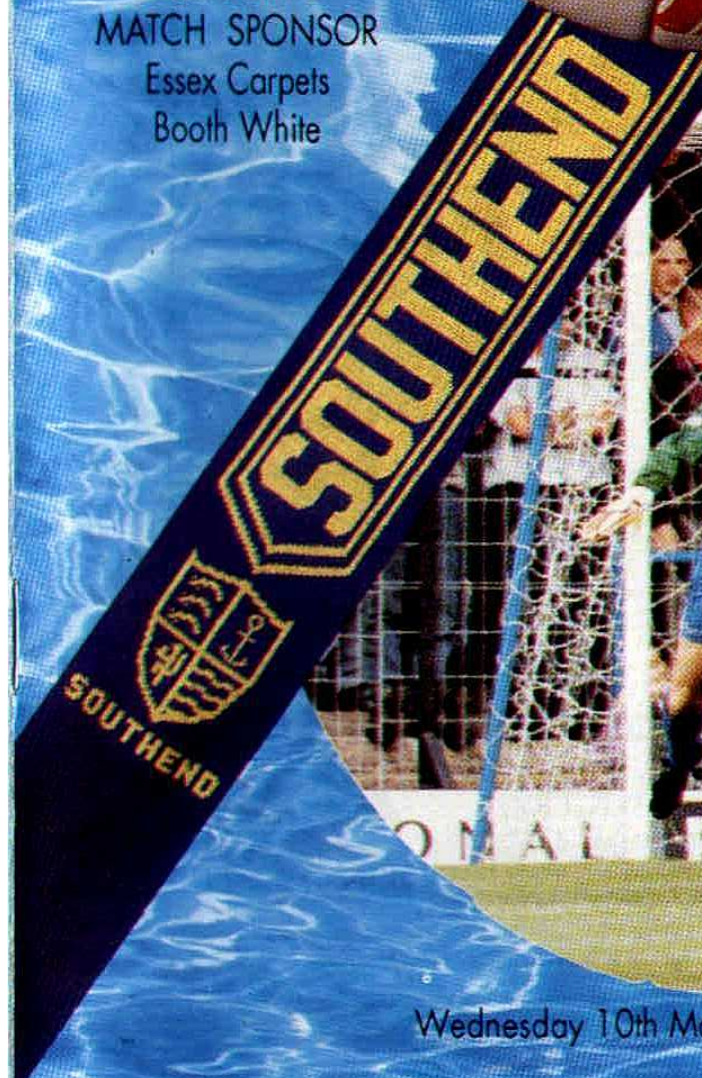
Barclays League Division 1

**PERSONAL
COMPUTERS
MAIN SPONSOR
SEASON 92 - '93**



MATCH SPONSOR
Burmah Petrol

ASSOCIATE
MATCH SPONSOR
Essex Carpets
Booth White



Wednesday 10th March 1993 Kick Off 7.45pm

MATCHDAY MAGAZINE

£1.40

TODAY'S MATCH SPONSOR



Burmah



**YOUR
REWARDS
POINTS
STATION**



**CALL
in for
Details**

Start Collecting NOW!

**Oasis
Garage**

654 Sutton Road,
Southend,

Tel: (0702) 619094





Our performance on Saturday was doubly disappointing for everyone concerned.

Firstly, at this stage of the season, we all accept, in our position that perhaps points are more important than performance. Sadly on Saturday we had neither points nor performance to console ourselves with. Charlton are a hard-working, somewhat uncompromising outfit who we knew would be difficult to break down. Indeed, we have earned a similar reputation over recent weeks.

In the event, we didn't break them down and contributed in no small measure ourselves to both their match winning goals. As I say a day of

disappointment all-round.

Such is football and tonight gives an early opportunity to show our character in no small measure against one of the best footballing sides in the Division. The contrast in style between Swindon and Charlton will be interesting for the onlooker. For ourselves it poses a problem of a different type to that met recently, and which has to be overcome with positive thinking and play.

At Swindon we gifted the game to Glen's men with the first three goals but made a spirited fight back to leave them hanging on at the death. Thus, they will not arrive complacent, even if buoyed by a superb win at Watford on Saturday.

The position at the base of our League continues to be tight with fourteen games to go and the teams to escape will be those who put together a run of victories at some point between now and May. We have to put aside disappointment, speculations and media hype at this time and boringly perhaps deal with each game on its own merits. Charlton has passed, we must learn from it but forget it at the same time. Tonight is our task to focus on regardless of all other matters, and we must apply ourselves properly to achieving the success we all, especially perhaps our loyal supporters, wish to see.

Come on you Blues!

SOUTHEND
UNITED
FOOTBALL
CLUB
SEASON 1992/93
Ground: Roots Hall
Tele: 0702 340707
Fax: 0702 330164
President



N. J. Woodcock
Chairman & Managing Director
V. T. Jobson
Vice Chairman & Chief Executive
J. W. Adams
Board of Directors
J. Bridge
J. N. Foster
D. M. Markscheffel
R. J. Osborne
W. R. Kelleway
B. R. Gunner
Associate Director
W. E. Parsons
Company Secretary
P. R. Curtis
Manager
C. Murphy
Coaching Staff
D. Greaves
C. Norman
Hon. Medical Secretary
Dr. A. K. Sinha
Sports Therapist
A. Raw
Commercial Manager
J. S. Carter
Stadium Manager
D. Jobson
Programme Editor
K. O'Donnell
S.U.F.C. Telephone Services:
Marketing: 0702 332113
Shop: 0702 435067
Ticket Office: 0702 435602
Restaurant: 0702 351403
Soccerline: 0839 66 44 44
Infoline: 0839 66 44 43
Quiz line: 0839 66 44 23
Calls cost 36p min/ cheap, 48p/min at all other times

Views expressed in this magazine are not necessarily those held by Southend United F.C.

**BLUES
SPECIAL OFFERS**

**FREE PLANNING
FREE ADVICE
FREE ESTIMATES**

**LARGEST SELECTION OF CARPET
AND CARPET TILES IN ESSEX**

Jasé
carpet & carpet tile centre

**10% DISCOUNT WITH
THIS ADVERT DURING
92/93 SEASON**

**WE ARE ON
THE BALL!!**

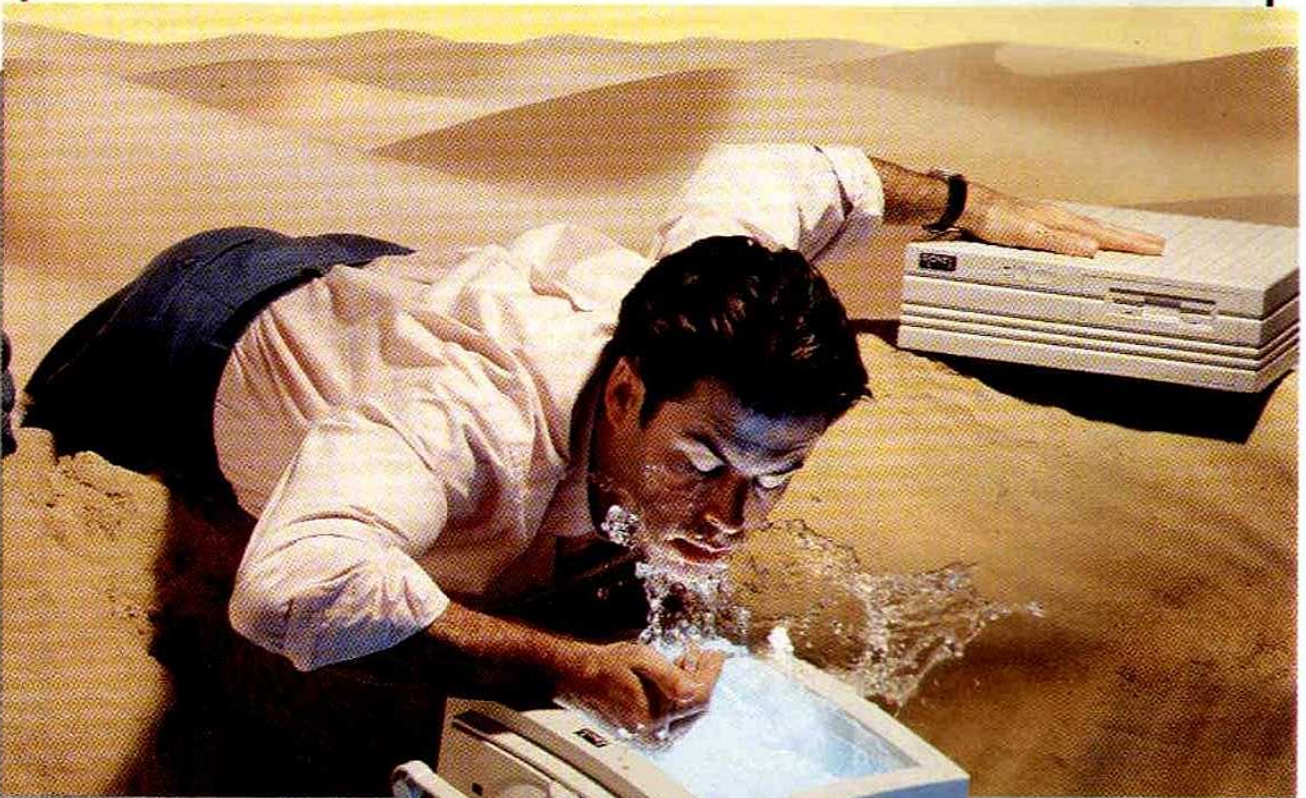


TELEPHONE: SOUTHEND 345667

306 - 308 London Road, Westcliff-on-Sea

**(opposite the Army
and Navy Stores)**

ELONEXHILARATION



Elonex wish the Directors, Players and Supporters of Southend United an exhilarating season of exciting football.

Season ticket holders should call Elonex to find out more about our Elonextraordinary deals on personal computers.

All PC's include minimum 2MB RAM, 50MB Hard Disk, low radiation colour monitor, DOS-5, Windows 3.1 and 12 months free on-site maintenance.
PC-420XM £795.00

ELONEX

**PERSONAL
COMPUTERS**

London office: Tel 081 452 4444 Fax 081 452 6422 Bradford office: Tel 0274 307226 Fax 0274 307294

IN THE WINGS

BLUE RESERVES NEWS

Up to and including 3rd March 1993

20 Aug	Thur	READING	H	3-1
27 Aug	Thur	Barnet	A	1-4
3 Sep	Thur	CAMBRIDGE UNITED	H	2-2
10 Sep	Thur	GILLINGHAM	H	3-1
24 Sep	Thur	Barnet	H	3-1
30 Sep	Wed	Wokingham Town	A	5-0
6 Oct	Tues	LEYTON (Essex Senior Cup)	H	2-3
15 Oct	Thur	Wokingham T (Pres Cup)	A	4-1
22 Oct	Thur	WYCOMBE WANDERERS	H	6-1
28 Oct	Wed	Wycombe Wanderers	A	2-2
5 Nov	Thur	BRENTFORD	H	1-2
10 Dec	Thur	Reading	A	0-1
16 Dec	Wed	Leyton Orient	A	0-0
18 Jan	Mon	Cambridge United	A	1-3
28 Jan	Thur	CRYSTAL P. (Pres Cup S/F)	H	2-3
2 Feb	Tue	Gillingham	A	0-1
18 Feb	Thur	SUTTON UTD.	H	1-1
24 Feb	Wed	Brentford	A	1-3
4 Mar	Thur	CRYSTAL PAL.	H	3-2
22 Mar	Mon	Sutton Utd	A	
8 Apr	Thur	WOKINGHAM TOWN	H	
21 Apr	Wed	LEYTON ORIENT	H	
28 Apr	Wed	Crystal P	A	

CAPITAL LEAGUE TABLE

up to and including 26th February '93

	P	W	D	L	F	A	Pts
Barnet	12	9	1	2	40	16	28
Cambridge Utd.	15	7	3	5	33	27	24
Brentford	12	6	3	3	31	25	21
Gillingham	15	6	3	6	26	23	21
Southend Utd.	15	5	4	6	29	24	19
Sutton United	12	4	6	2	18	17	18
Reading	12	6	0	6	27	30	18
Leyton Orient	12	5	2	5	25	24	17
Crystal Palace	10	3	5	2	19	13	14
Wycombe Wand.	13	2	5	6	20	32	11
Wokingham Town	14	1	2	11	15	21	5

Farnborough Town & Wealdstone Resigned - Records expunged.

OUR NEXT OPPONENTS

Sutton Utd (A)
at Borough Sports
Ground
in the
Capital League
Monday 22nd March
K.O. 7.30pm

SOUTH EAST COUNTIES LEAGUE TABLE

up to and including 20th February '93

	P	W	D	L	F	A	Pts
Millwall	22	13	5	4	62	36	31
Arsenal	21	12	5	4	49	25	29
Tottenham Hotspur	19	13	2	4	47	19	28
Watford	22	9	8	5	35	32	26
Q.P.R.	20	12	-	8	52	32	24
Ipswich Town	24	10	3	11	26	39	23
Charlton Athletic	21	8	6	7	41	39	22
Cambridge Utd.	20	9	3	8	44	44	21
West Ham United	22	10	-	12	47	56	20
Portsmouth	24	7	6	11	30	41	20
Leyton Orient	20	8	2	10	26	37	18
Chelsea	20	7	3	10	45	41	17
Norwich City	19	8	1	10	42	45	17
Fulham	19	6	4	9	31	42	16
Southend United	20	6	3	11	30	44	15
Gillingham	23	3	3	17	26	61	9

OUR NEXT OPPONENTS

at Saville Road Ground
West Ham Utd. (A)
on Saturday 13th March
K. O. 11.00am
South East Counties League

BLUES YOUTH NEWS

PORTSMOUTH 0
SOUTHEND 3

Last Saturday the Youth side travelled to the South Coast to play against Portsmouth.

The first half was goalless, but Jae Martin went close on two occasions and was most unlucky not to put us in front. In the second half we came out looking a different side by tightening it up at the back. Through this it was only a matter of time for the first goal to come. This happened mid way through the half when Declan Perkins latched onto a through ball and then with class clipped the goal keeper. This inspired the team and Jae Martin consolidated the result with two fine goals. The first after great control and finish, the second a superb opportunist goal from outside the area. In between Damion Stone and Tony Kinear went close.

The game was won by a good all round professional performance. With this win under our belt we look forward to taking on West Ham this Saturday.

Blues Welcome

During the last few years Swindon Town has had more than its fair share of ups and downs. Only seven years ago the club was in Division Four and won promotion under the management of Lou Macari by winning the championship with a record points haul of 102.

The following season of 1986-87 proved just as successful as Swindon won promotion for the second year running. They finished 7 points behind second placed Middlesbrough in Division Three and ten points behind champions Bournemouth but qualified for the then newly instituted play-offs.

They were probably not particularly pleased with that outcome because third place would normally have secured automatic promotion. However, they won through by beating Wigan Athletic 3-2 on aggregate in the semi final and then defeated Gillingham 2-0 in a replayed final. The 5 extra matches attracted a combined attendance of almost 70,000 fans

to swell their bank balance.

Problems then began to arise. Lou Macari left the club as did Chairman Brian Hillier. Both were in trouble over a betting scandal and there were also allegations of financial mismanagement. However, the 1989-90 season proved the most successful on the pitch in the club's history.

The team finished 4th in Division Two, their highest ever placing, and reached the play-offs for a place in Division One. Blackburn were beaten 4-2 on aggregate in the semi-final and then, before 72,873 fans at Wembley Stadium in the final, Swindon beat Sunderland 1-0 to reach Division One for the first time ever.

Swindon dominated that match but could only break through once when Alan McLoughlin's shot took a wicked deflection off the Sunderland captain Gary Bennett in the 27th minute.

That was on the 28th May 1990 but the club's great joy was shortlived as only 10 days later

they were relegated to Division Three by the Football League. That was following an 8 hour hearing at which the club admitted 36 breaches of League rules, 35 involving irregular payments to players.

Swindon issued court proceedings against the League who had decided to promote Sunderland to Division One and Tranmere to Division Two in place of Swindon. An appeal to the F. A. Panel was also lodged and Swindon agreed to drop the court proceedings and abide by the F.A.'s decision.

On July 2nd 1991 the F. A. reinstated Swindon in Division Two leaving the unfortunate Tranmere Rovers in Division Three. It was a highly unsavoury affair which did the image of football no good whatsoever.

It certainly did nothing for the club's fortunes on the pitch as in 1990-91 they only just avoided relegation to Division Three. Ossie Ardiles had taken over as manager from Lou Macari but he was replaced in April 1991 by present manager Glen Hoddle.

Under Hoddle the club's fortunes improved once again. After a good start to the 1991-92 season a 2-1 victory at the County Ground against Newcastle United put Swindon in second place in Division Two. However, a disastrous run of only 4 victories in their following 21 games dropped them out of contention. Although they only lost one more game in the last 10 of the season, and that in their final match, the gap was too great to make up and they finished disappointingly in 8th place.

The quality of the football played by the team brought a great deal of praise, in marked contrast to the publicity given to Cambridge United. In fact they were criticised for playing too much football! It certainly is true that they did not

Meet The Manager: Glen Hoddle

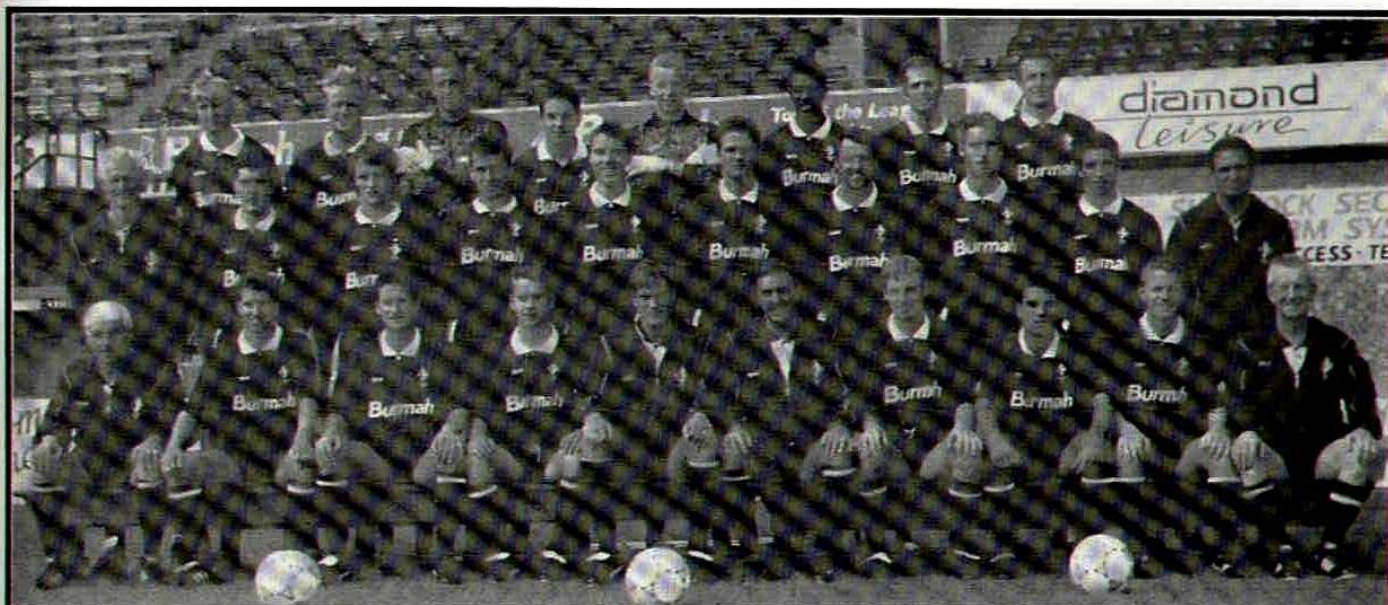


A man needing no introduction, Glen has transferred his playing philosophy into Management, by contrast with many who make the transition.

Indeed, a former F. A. Director of Coaching wrote only last week that Swindon's approach and execution was a case of making "a silk purse from a sow's ear" in contrast to the rest of the English teams.

Certainly his pure football approach is one which has paid dividends for Swindon and has brought his managerial qualities to the attention of Premier League hot shots.

Swindon Town F.C.



Left to Right. Back: John Moncur, Darren Hall, Fraser Digby, Paul Hunt, Nicky Hammond, David Bennett, Craig Maskell, Steve White.

Middle Row: John Trollope (Youth Team Manager), Ross Maclaren, Nicky Summerbee, Colin Calderwood, Shaun Taylor, Adrian Viveash, David Mitchell, Andrew Thomson, Kevin Horlock, Andy Rowland (Reserve Team Coach)

Front Row: Kevin Morris (Physio), Martin Ling, David Kerslake, Wayne O'Sullivan, Glenn Hoddle (Team Manager), John Gorman (Asst. Manager), Paul Bodin, Shaun Close, Micky Hazard, Eddie Buckley (Kit Manager).

win enough games and that inconsistency has carried over to the present campaign.

Their match against Blues at the County Ground earlier this season is a good example. Swindon tore Blues to pieces early on and raced into a 3-0 lead. When a real hammering seemed on the cards Swindon eased off. Blues came back into the game and might even have snatched a draw at the end. Former Blues' favourite Martin Ling was on the score sheet that day and he has been playing well in the Swindon team.

At Newcastle, Swindon showed they were a quality team and although the match finished 0-0 it was certainly full of good entertaining football by both sides.

Now that Swindon have put the problems of the last few years behind them they are looking to win promotion to the Premier League ultimately. Tonight they certainly pose a formidable barrier to Blues' efforts to maintain their hard won status in this Division.

Star Visitor

STEVE WHITE

Currently enjoying one of his best-ever spells sharp-shooter Steve White is now in his sixteenth season in the Football League and his seventh with Swindon Town, his fourth Football League Club quite apart from those he has served on loan.

Born in 1959 at Chipping Sodbury, Steve played for Mangotsfield before linking up with Bristol Rovers and in only his second first team game as a 18-year-old netted one of the goals in Rovers' 3-1 win at Millwall in April 1978, when Bobby Gould got one of the other Rovers' goals from a penalty. He scored 20 goals in 50 games for Rovers then moved to Luton for £190,000 in December 1979.

In two and a half seasons he got 26 goals for the Hatters and then moved to Charlton in the exchange deal that took Paul Walsh

to Luton and in his season at The Valley he got 12 goals and also had short spells on loan to Lincoln and Luton.

1983 saw him back with Bristol Rovers for just £45,000 less than a quarter of what they had sold him for four years earlier. He got another 24 goals in three seasons and then moved to Swindon on a free transfer. He has proved to be one of their best signings ever. Only once in seven seasons has he failed to reach double figures and his 27 goals in 1989/90 were a major factor in winning the promotion that they ultimately had to forfeit just when they seemed to have climbed to the old Division One for the first time ever.

Last season his tally was 10, but in the present campaign he has come back with a bang since mid-season, netting a hat-trick last Saturday at Watford and taking his career tally to 198. He will need watching tonight.

The Travelling Team

DAVE BENNETT

Midfield - Former F. A. Cup winner with Coventry, signed from Sheffield Wednesday for £50,000 two years ago, but sustained a broken leg in only his second appearance for the Town. Suffered another break while on loan to Shrewsbury in November 1991 and then yet another during a pre-season game at Yeovil. Brother to Sunderland defender Gary.

PAUL BODIN

Defender - Welsh International full-back signed for a bargain £25,000 from Newport County in March 1988. Previously with Bath City, where he was top scorer with 27 League and Cup goals in 1986/87. Joined Crystal Palace for £550,000 in March 1991 but returned to the County Ground just ten months later.

COLIN CALDERWOOD

Defender - The club captain and currently the longest serving Town player, now in his eighth season at Swindon. The only surviving member of the Town's Fourth Division championship-winning side of 1985/86, Colin has made maximum appearances in four out of seven seasons. His six goals last term was his highest tally

to date. Previously with Mansfield Town.

SHAUN CLOSE

Striker - A £70,000 signing from AFC Bournemouth, Shaun has made just a dozen full appearances since coming to the County Ground in September 1989. Was top goal scorer for the Combination side last season, with 25, but has scored just one League goal for the club - after just 33 seconds at Oxford in March.

FRASER DIGBY

Goalkeeper - For the first time since he arrived at Swindon, six years ago, the former England Under-21 'keeper has not been the club's automatic first choice, having had to share the number one spot with Nicky Hammond during 1991/92. The former Manchester United apprentice has now notched up over 270 appearances for the club.

NICKY HAMMOND

Goalkeeper - Made 31 Senior appearances for Swindon last season, by far his best return since signing for the club five years ago. Has twice recovered from a broken leg. Arrived on a 'free' transfer from Arsenal, having previously had loan spells with Bristol Rovers, Aberdeen and Peterborough United.

MICKY HAZARD

Midfield - Signed from Portsmouth in September 1990 for £130,000 after spending eight years at White Hart Lane, during which time he collected both F. A. Cup and UEFA Cup winners' medals. A £300,000 move across London, to Chelsea, followed in 1985. Now playing some of the best football of his career, he missed just two League games last season.

GLEN HODDLE

Defender - Joined the Town as a player-manager in April 1991, and now normally operates as a 'sweeper'. Capped 53 times for England, Glenn spent 12 years at Tottenham, followed by another three with A. C. Monaco. He was out through injury for half of last season, but began the current campaign in style with a 30-yard winner against Sunderland.

DAVID KERSLAKE

Midfield/Defender - Signed for £110,000 from Queens Park Rangers in November 1989, David represented England at Schoolboy, Youth and Under-21 levels. He joined the Loftus Road club on an apprentice, making his first team debut against Partizan Belgrade in a UEFA Cup tie in 1984. Most frequently seen for Swindon as an attacking right-back.



GENERAL SIGN MANUFACTURERS

Specialists in Self Adhesive
Lettering & Graphics

Computer. Cut for:

Vehicles - Windows - Displays - Site Boards -
Facias - Exhibitions - Point of Sale - Boats -
Trains and Planes

SWING SIGNS,

BANNERS AND MAGNETIC

(0268) 777661 24 hours

(0268) 745335 Fax

NO 1 CAR GRAPHICS

NO 1 IN CAR GRAPHICS

NO 1 IN CAR GRAPHICS

NO 1 IN CAR GRAPHICS

NO 1 IN CAR GRAPHICS

NO 1 IN CAR GRAPHICS

WORK TO YOUR OWN DESIGN
ORDERS TAKEN THROUGH POST

Unit 3, Rayleigh Road, Thundersley,
Benfleet, Essex SS7 3TN

Telephone: (0268) 777661 24 hour

(0268) 777662

Fax: (0268) 745335

AGENTS WANTED

The Travelling Team

MARTIN LING

Midfield - Rejoined the Town a year ago, after almost five years with Southend. A former Exeter City apprentice, Martin was at the County Ground for just 93 days during 1986, making only two senior appearances. In and out of the side last season, the slightly-built midfielder has enjoyed for an extended run this time around.

ROSS MacLAREN

Midfield/Defender - A £140,000 signing in 1988 from Derby County, where he won a Second Division championship medal, and previously with Shrewsbury Town. Ross has now recovered from a hernia operation in the spring. Now nearing his 450th League appearance since his debut in 1980.

CRAIG MASKELL

Striker - Summer signing from Reading in a £250,000 deal, with Tom Jones moving in the opposite direction. Top scorer for the Elm Park club last season, with 15 goals, Craig was also leading marksman in two seasons with Huddersfield. Began with Southampton and joined Swindon on loan in 1987,

scoring six goals in four reserve games.

DAVID MITCHELL

Striker - Capped 17 times for Australia, David joined the Town a year ago from Chelsea for a nominal fee and found the net eight times in 28 full appearances. Much travelled goalscorer, having also seen service with Eintracht Frankfurt (Germany), Glasgow Rangers, Feyenoord (Holland) and Newcastle United on loan.

JOHN MONCUR

Midfield - A transfer-deadline £80,000 signing from Tottenham last season, John spent almost eight years at White Hart Lane after completing his apprenticeship. He made his League debut while out on loan to Doncaster in 1986, and further loan spells took him to Cambridge, Portsmouth, Brentford and Ipswich.

NICKY SUMMERBEE

Defender - Started a game for the first time in the final fixture of 1990/91 and made 20 full appearances last season. Began as a striker, but now attacks down the right-flank from the back. Has an excellent pedigree, as his father, ex-Swindon, Manchester City and England forward Mike Summerbee, his grandfather and great uncle all played League football.

SHAUN TAYLOR

Defender - A £200,000 signing from Exeter City, Shaun was voted Town's Player of the Year last season. He was also City's Player of the Year in their Fourth Division championship side of 1989/90. Came into League football late, signing for the Grecians from Western League Bideford Town at the age of 23.

ADRIAN VIVEASH

Defender - Progressed through the 'ranks' at the County Ground, having started his career as a winger. Now plays on the left of the 'back four'. After a League debut that lasted just 21 minutes, he made 27 full appearances in 1990/91, but less than a dozen last season. Currently on a monthly contract.

STEVE WHITE

Striker - A 'free' transfer signing from Bristol Rovers six years ago, Steve reached a 100-goal milestone for the club last season, before being sidelined with a back injury. Despite playing only 28 games, he was still the club's second highest goalscorer with 15. Began his League career with Rovers in 1977, before 'big money' moves took him to Luton and Charlton.

**1000's OF
VINYL AND
CARPET
REMNANTS**

Less than Trade Prices
**UP TO 70% OFF
ROOM SIZE REMNANTS**

WE GUARANTEE YOU CANNOT BUY BETTER!

RAYLEIGH
21-23 Eastwood Road 0268-770738
HADLEIGH
363 London Rd. (A13) 0702-552018
CANVEY
125-7 Furtherwick Rd. 0268-690955
5TH WOODHAM FERRERS
12 Heralds Way 0245-323525

**100's OF
ROLLS OF
CARPET**

ALWAYS IN STOCK!

UP TO
**50% OFF
ROLL STOCK**

Walk in and walk out with up to
50% Saving on Carpets and Vinyls

FREE FITTING

On most carpets £6.99 sq. yd. and over
by our experienced craftsmen to
the very highest specification.
(Minimum order value £100)

ECS
ESSEX CARPET SALES



One Vision with Nick Alliker

HAMMERS DRAW ON EMOTIONAL AFTERNOON

At the top of the table on the last soccer Saturday of February, West Ham gained a point on an emotional afternoon at Sunderland. The 2,000 travelling fans from the East-End made new friends on Wearside in the face of tragedy, when the minute's silence in tribute of the Hammers favourite son, Bobby Moore, was treated with absolute respect. It was a deafening silence. Kenneth Wolstenholmes commentary on Moore lifting the 1966 World Cup was played to the crowd, and perhaps, as one journalist described, West Ham didn't have the stomach for the League fight, as they left their hearts at Upton Park. The match finished Sunderland 0 West Ham 0.

Elsewhere, lucky Millwall fluked a point at Cambridge to put their promotion train back on the rails. The Lions boss Mick McCarthy did admit his side could have finished with nothing had Cambridge taken their chances. The Londoners had conceded seven goals in their previous two matches, but had kept the tally down to one at the Abbey Stadium as they entered the final few minutes. Chris Leadbitter had a number of opportunities for the home side to steal the points, but watched the ball avoid the goal. Millwall had outclassed United for much of the first hour with some slick soccer, but had only the one strike that mattered. It came right at the end of the first half

when striker Allen performed heroics in the Cambridge goal, before they equalised on the hour. Lee Butler grabbed the glory and Cambridge edged to mid-table safety.

Tonight's visitors maintained their promotion push with a 1-0 win over high riding Portsmouth. Pompey boss Jim Smith was, by all accounts, none too impressed by Town's tough tackles but it may have been a case of sour grapes as Paul Bodin grabbed the 88th minute winner. The South-Coast



Credit: David Montier

side had their moments when Powell missed a simple tap in and Burnes going close with a 25 yard screamer.

Brenford slumped to their eighth home defeat of the season, going down 1-0 to Peterborough. The Bees have lost their last six at Griffin Park and continued their alarming slide

down the table. In front of their lowest gate of the season Phil Holders men failed to find the target, despite long periods of sustained pressure. Tony Philliskirk got the only goal to count after 33 minutes to take the three points to The Fens.

And finally in the Saturday matches Paul Williams struck the only goal at Oxford, to ensure Derby tag along in the play-off hunt.

Luton Town's troubles intensified with Manager David Pleat and Managing Director David Kholer said to be at loggerheads just 48 hours before their teams' 2-2 draw with Barnsley. Apparently Kholer had offered top striker Phil Gray to Chelsea to improve the Town's bank balance, much to the alleged annoyance of the manager. But on the field, whilst Gray is still a Luton man then he's scoring goals for them. He bagged another last Saturday, as he hit home an 88th minute penalty to earn the draw. Town were then eight matches unbeaten and had taken the lead through on-loan star Kerry Dixon. But Barnsley battled back well, and eventually equalised just after the break with an amazing diving header from Brendan O'Connell. David Currie headed the Yorkshiremen in front, before Gray pounced with his 15th of the season.

In the Sunday matches Birmingham maintained their bottom spot, with a 2-1 defeat at Leicester, while Newcastle United smashed three goals past Tranmere Rovers at Prenton Park.

MAGNATROL

Control Systems Limited

ENVIRONMENTAL CONTROL, PROCESS CONTROL

ELECTRICAL SERVICES, MECHANICAL SERVICES

47 SOUTHEND ROAD, HOCKLEY, ESSEX, SS5 4PZ

Telephone: (0702) 206613

Facsimile: (0702) 203579



We thank the Evening Echo for allowing us to use this photo of the late Bobby Moore O.B.E. in our Matchday Magazine against Charlton

STANDING BLUES CHEAPEST

- AND THAT'S A GEORDIE FACT!

The results provided evidence that there are some areas of difference between the clubs, as one would expect but also similarities. For example, Adult standing prices generally ranged from £8.00 at West Ham and Peterborough, to £6.00 at four other clubs.

But no-one matches Blues £4.00 for the North West Terrace which is available for members and un-employed alike.

Seat prices vary in stadia possibly due to the number of seats available. The dearest Adult seat is also available at West Ham for £15.00 and the cheapest the "Third choice" seat at

Luton which is £6.50 behind £10.00 and £13.00. Wolves and Watfords' "just choice" seats at £8.00 are the cheapest home value with Blues £8.50 member seats in the West Stand coming close for good value.

Blues also show creditably in the Season Ticket stakes with Wolves £130 apparently the cheapest season seat in the League this season. Blues of course came out with £150 for early purchasers.

So, all in all, those who may have you believe it's over the odds at Roots Hall are proved, as in other things, to be wrong yet again.

All Clubs in Division One were recently contacted by Newcastle United who had determined to undertake a survey on admission prices this season in the League's top section.

The Magpies' men sought details of season tickets and seating and standing charges on a game by game basis.



Helping the most important people in football

Football is much more than a game of 90 minutes. Every day clubs throughout Britain are providing recreational and sporting opportunities for their local communities.

Much of this has been achieved with the help of the Football Trust as part of its commitment to Football. The trust has granted £4M to set up the National Football and Community Development Scheme.

Bringing club and community together. Trust-backed initiatives have provided a variety of local amenities, including

- Artificial pitches for local teams
- Coaching for youngsters
- Support for women's football
- Facilities for people with disabilities

The Football Trust is helping the game at all levels



THE FOOTBALL TRUST
Helping the game

Pub Talk - Pub Talk

One of the most publicised results in the whole of the Football League last week was that in which Birmingham City beat Oxford United 1-0. It was not just that they were winning for the first time in seven games nor even that the match-winner came from young Canadian International Paul Peschisolido with his third goal in the Football League. The focus was on the new Blues owners and particularly on young blond managing director Karren Brady.

In an era when not every boardroom allows ladies even to enter it is fascinating to watch the progress of this new development at Birmingham that is closely connected with their battle to stay in Division One and, just as important, to bring their rather antiquated ground into line with the needs of the end of the twentieth century.

Ladies reading this may well comment that in a club where a variety of men have consistently failed to deliver the goods a lady can perhaps do no worse. Though there is no direct precedent for a lady managing director, there has been abundant evidence in recent years that ladies are now doing far more in football than make the tea and launder the kit or even than answer the phone.

Several clubs have had a lady club secretary in recent years and Gill Palin at Crewe has been in office almost as long as manager Dario Gradi, who is far and away the longest-serving manager in the lower Divisions.

Bournemouth have a lady Chief Executive in Annie Bassett, formerly with Birmingham and Burnley are one of several clubs to have a lady commercial manager, Cynthia

Haworth by name.

It is maybe a small point but nevertheless symptomatic of a general trend that a ladies' column is by no means unknown in club programmes these days.

Walsall for instance have a small rota of ladies who write a column issue by issue based on recent games and where relevant varied experiences at away grounds. Though no lady has yet become a television soccer pundit BBC Radio



have Eleanor Oldroyd conducting interviews of football folk and at times acting as anchor girl for soccer presentations while a number of ladies act as match reporters for the Saturday 'Sports Report'.

How well do they do the job? Rightly or wrongly, the reports they file seem little different from those filed by the males of the specie and, while it is impossible to have ladies in the roles now occupied by

men such as Bob Wilson and Alan Hansen since they obviously haven't played the game at top level there is no doubt that they can react as sensitively as men to the factors which really matter to spectators, namely the excitement factor, the tension, the ball skills, the spectacular shooting, the daring goalkeeping and the apparent injustices of certain decisions. Whether women can have as clear an idea of tactics as males is more open to question, but when we read about the game we usually want to savour the excitement rather than the more technical aspects. So lady reporters are clearly here to stay, representing the increased proportion of ladies in attendance at games.

But how will Karren Brady fare in the essentially male enclaves of Football League boardrooms. Will she in due course become the soccer equivalent of lady Astor the first lady MP? So that in, say, half a century a lady managing director will not occasion comment. Male reactions to her appointment will vary with dogs in mangers contrasting with those who are delighted to see young female flair given a chance. Whatever the ultimate outcome Karren deserves to be judged on her merits as a soccer top level administrator and not on her age or gender. Birmingham City's results will be watched the length and breadth of the country and the fact that the attendance for her 'debut' against Oxford was the highest since the Newcastle game at the beginning of November suggests that her appointment won't do the gates any harm either.

ECR

Retail Terminals & Cash Register Systems

567 EASTERN AVENUE, GANTS HILL, ILFORD, ESSEX IG2 6PJ

081-554-8282



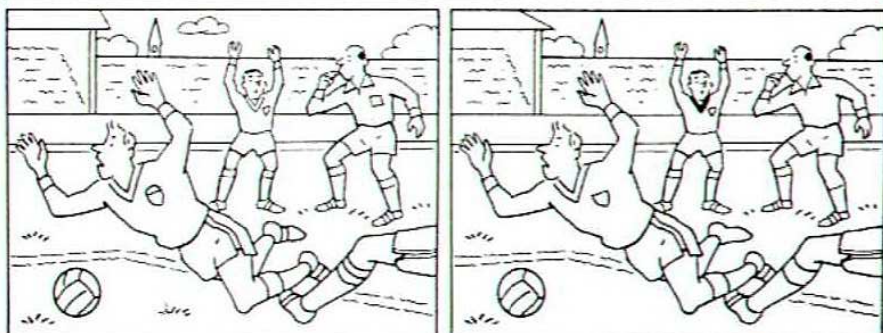
OUR TEAM ALSO
COVERS BUSINESS
EVERYWHERE.

••• YOU'RE
BETTER OFF
TALKING TO
 BARCLAYS

We know it's teamwork that counts, so come down
to see our squad for the back-up your business needs.

QUIZ TIME

Spot the Difference no. 3



Can you spot the 10 differences between the two pictures?

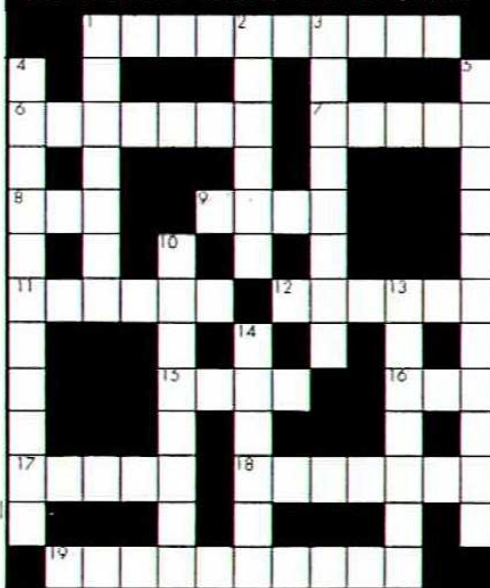
ACROSS:

- 1 Males at York City (nickname) (10)
- 6 Scottish team who play at Broomfield Park (short) (6)
- 7 The Railwaymen play for this club (5)
- 8 Molby (3)
- 9 First team to score takes this (4)
- 11 Erik Thorstvedt Country of birth (6)
- 12 Similarity between Rovers, Brighton and West Bromwich (6)
- 15 Purpose for why the ref carries a coin (4)
- 16 ... Hartford, former W.B.A. player (3)
- 17 The Park where Brechin City play (5)
- 18 Halves adjacent to the number five (7)
- 19 Males at Halifax Town (nickname) (3 & 7)

DOWN:

- 1 Paul, former Ipswich player who has a Grimsby Town connection (7)
- 2 Address of the Lions (3 & 3)
- 3 Bob Stokoe, Jimmy Greenhoff and Eddie Gray have all managed this club (8)
- 4 Northern Ireland's most capped player (3 & 8)
- 5 German European player of the year 1976 (11)
- 10 He was 50 years of age when he played his last competitive match (8)
- 13 Nationality of Zenga the goalkeeper (7)
- 14 Italian league club (1, 1, 4)

SPORTS CROSSWORD



HALF TIME QUIZ

1. What is the inscription at the top of Liverpool's new centenary badge?
2. Who were the 1992 champions of Spain?
3. In which year did Trevor Francis make his Football League debut for Birmingham?
4. He is now an English Premier League manager, but when a player, his name was always first on Ron Greenwood's England team sheet. Who is he?
5. Which goalkeeper moved from Crystal Palace to Walford on a free-transfer earlier this year?
6. Can you name the losing semi-finalists in the 1992 European Championship?
7. Which teams contested ITV's first live Football League match in 1983?
8. Who replaced Phil Neal as manager of Bolton?
9. Nicknamed 'Rambo', this Scottish International striker hit 22 goals for Aston Villa during 1988-89. Who is he?
10. Which Midlands club did Sammy Chung manage during the 1970's?

**Answers on
page 34**

COSTAIN

ENGINEERING & CONSTRUCTION

*We are pleased to support
Southend United Football Club*

Costain Building & Civil Engineering Limited
St Mary's House, 90 Victoria Road, Chelmsford
Essex CM1 1RD Tel: 0245 353602 Fax: 0245 351696

GIVE YOURSELF EXTRA-TIME

Take the train and see the game

By substituting the car for the train you'll bypass traffic jams and parking problems.

Frequent trains call at Prittlewell Station (less than five minutes walk to Roots Hall) on the line from Brentwood, Shenfield, Billericay, Wickford, Rayleigh and Rochford into Southend Victoria and a regular service links Basildon and Benfleet with Southend Central.

Regular travellers will benefit further with a Network Card which allows the holder to take up to three other adults at 1/3 off the full range of leisure tickets (including Day Returns). Up to four accompanying children (5-15 yrs) can travel for just £1 each.

On Saturdays and Sundays, parking is free at most Network SouthEast Stations.



For full details of fares and train times contact your local telephone enquiry bureau:

London: 071-928 5100 (24 hour service)

Southend 611811 or

Chelmsford 252111

On the table with **ALAN RAW**

Hello and welcome to tonight's game. At the time of writing these notes I am working hard with Brett Angell in the hope of his being fit for tonight's match. Brett pulled his left calf on Saturday and we are now battling against time to return Brett to match fitness.

David Martin now fully recovered from his ankle ligament injury played Saturday with no reaction and I am pleased to say will be available.

Andy Ansah who came in on Monday morning with flu and also a slight hamstring pull will also be battling away to make tonight's game.

Stan Collymore, another victim of this dreaded Southend flu, is also working hard with a view to being fit. Also Kevin O'Callaghan continues to make good progress after his Achilles tendon operation. Although still a little sore he is now back training with the 1st team squad and we are hoping he will be fit enough to play in our next reserve team fixture.

YTS Players still in the treatment room are Jamie Southon - Hamstring, Neil McGrew - groin strain and Neil Rowbury - thigh strain. These are all recovering well and with the exception of Neil Rowbury should be fit for their next fixture.

And finally Ben Thake who today (Monday 8th March) had 2 injections into his left groin (not the best of places to have them) to alleviate his adductor tendon problem. You may remember Steve Tilson having the same trouble last season where similar treatment proved most effective, so lets hope it works equally well for Ben.

Enjoy tonight's game and I'll hope to see you in the Far Post Club.

Around The Ground

Amidst the ultimate disappointment experienced on Saturday and followed by the nauseating events at Maine Road on the Sunday, this writer hears above all one voice and retains one vivid memory.

The voice belongs to someone I have never met, nor am likely to, but I wish I could for he is symbolic of the flickering hope one has for the future of the game in these difficult days when the anarchists on terraces and in stands seem likely to win not only battles but, perish the thought, the very war itself.

The voice to which I refer was strong, even passionate and it spoke just two

words. Those words were "Shut Up" and their power ensured that all of us from Southend and from Charlton who wished to remember R. F. Moore O.B.E. and especially his time at Roots Hall were afforded the opportunity to do so with the dignity approaching that of the man himself. My thanks then to that voice from the South Bank and to all around the ground who either heeded it, or didn't need it, to observe a common decency and respect.

Decency and respect are too qualities our society maybe does not value highly enough. The ignorant and ill-informed cries of one or two in our Red Stand Block directed intermittently at the Chairman & Manager are simple examples. Wholesale pitch invasions are all the other end of the continuum but they both exhibit the same lack of respect for both the game and for honest toiling individuals.

We all have to battle to preserve our dignity and respect as now does the game itself, so next time the loud mouth that speaks the vacant mind next to you errs against those two qualities, maybe you can summon the courage to utter just two words. "Shut Up" said the man from Charlton and by so doing gave me hope that we, working together may yet make sense of what after all is the best game in the world.



ESSEX COUNTY CRICKET CLUB



Follow the County Champions in 1993

Southend Cricket Week

15th, 16th, 17th, 19th July v LEICESTERSHIRE
(Britannic Assurance Championship - 11am start)

Sunday 18th July v LEICESTERSHIRE
(Axa Equity & Law League - 12 noon start)

BLUES IN THE COMMUNITY WITH FRANKIE BANKS

Hello all,

I hope you're all well, free of colds etc. Hasn't that wind been cold of late.

Tonight we are doing a collection for Comic Relief. Some of our Junior Blues Members will be coming round with buckets to collect any of your spare change. You should be able to recognise them as they will be attired in their Junior Blues caps and scarves. They should also be wearing a red nose. Please donate something to this very worth while cause.

One of the Easter Soccer



Schools has been arranged (see details below). The 2nd one is being arranged for Tuesday 13th April through to Friday 16th April, again the cost will be £25. Details will be sent out to previous applicants. If you are interested and want further details, ring me on 0702 341351.

The F.A. Pre-lim Coaching Award has now been arranged for Monday 5th April at Francis Sports Ground, Eastern Avenue, Southend-on-Sea. The course costs £40.00 for the week and is from 10am to 4pm daily.



Peter Smart

Peter is 13 years of age and attends Appleton School in Benfleet. He has been supporting The Blues since 1987 and his first game was Blues v Northampton.

His most memorable match was away to Peterborough, David Crown scored twice and Blues gained promotion to the 3rd Division.

His favourite players are Stan Callymore, Andy Ansah and Keith Jones.

He plays football for South Benfleet United. He practices Karate and is a purple/white belt. He plays the drums.

His favourite TV programmes are "Harry Enfield" and "Only Fools and Horses".

F.A. PRE-LIM COACHING AWARD

On Monday 5th April through till Friday the 9th April, from 10am to 4pm qualified F. A. Coaches will be running the F. A. PRE-LIM Soccer Coaching Award at Francis Sports Ground, Eastern Avenue, Southend on Sea, Essex

- THE COST TO TAKE THIS AWARD IS £40 FOR THE WEEK!
- A PACKED LUNCH IS REQUIRED DAILY
- DON'T FORGET NOTE-PAD AND PEN, ETC.

To enrol on the Easter Pre-Lim Badge Award send your name, address, telephone number, age and a cheque or postal order for £40.00 made payable to "S.U.F.C. IN THE COMMUNITY", Roots Hall, Victoria Avenue, Southend-on-Sea. (Please send a S.A.E. for confirmation of booking).

EASTER SOCCER SCHOOL SPECIAL

On Monday 5th April through till Thursday the 8th April, from 10am to 3pm. Frankie Banks and his team of coaches will be running a Soccer School at North Crescent School, North Crescent, Wickford.

- 5-A-SIDE SOCCER
- TROPHIES FOR THE BEST 5-A-SIDE TEAMS
- A COPY OF SHOOT OR SOCCER STARS MAGAZINE
- SPECIAL AWARDS FOR INDIVIDUALS
- AGES FROM 6 YEARS TO 14 YEARS

To enrol for the Easter Soccer School Special send a letter with your child's name, address, telephone number, age giving your consent and a cheque or postal order for £25.00 made payable to "S.U.F.C. IN THE COMMUNITY", Roots Hall, Victoria Avenue, Southend-on-Sea. (Please send a S.A.E. for confirmation of booking).



THE F.A. PREMIER LEAGUE FOOTBALL
LIVE ONLY ON SKY SPORTS

E.E.C. SATELLITE SERVICES

No. 1 in Satellite, T.V. & Video

Tele: Southend (0702)

480169/471321





Photo: Nicky Hayes

Brett towers above Stan and the Charlton defence



Photo: Nicky Hayes

So near - So far for Andy



Official Suppliers

Action



Photo: Nicky Hayes

Chris Powell in full flight against "The Valliants"



Photo: Nicky Hayes

Desperate to equalize Brett hits this one too high

of Football Boots to S.U.F.C.

PLAYER SPONSORSHIP

▲ = TRACKSUIT ★ = BOOTS ● = SHIRT ■ = SHORTS * = SOCKS



Paul Sansome
Ted Parsons
Full Kit



David Martin
Hazel Parsons
Full Kit



Andy Sussex
Col. John Borman
Full Kit



Brett Angell
Dave Cooper
Full Kit



Keith Jones
* = Dave Burgess



Steve Tilson
★ = Brittanica Security Systems
● = Technic Mobik Tuning
▲ = Tina Martin



Stan Collymore
Progressive Printing U.K.
Full Kit



Andy Ansah
* = Chris & Marion Cave



Francisco Cagigao



Andy Edwards
* = Weir Enquiry
Agency (0268) 745120



Chris Powell
* Nick, Debbie & Robyn



Adam Locke



Pat Scully
Medico (U.K.) Ltd
Full Kit



John Cornwell
* = Steve Redburn
▲ ★ ● ■ = James Clark
of Steeple Bumpstead - Suffolk



Spencer Prior
Septer Sunday League
- Full Kit -



Mark Hall



Chris Hyslop



Kevin O'Callaghan



Danny Sains



Scott Ashenden



Steve Brown
Seetec Careers in Computing,
Hockley
0702 201070 - Full Kit



Paul Smith



Danny Greaves



Colin Murphy
Ted Parsons
- Full Kit -

Oasis Garage

654 Sutton Road,
Southend-on-Sea
Tel: 0702 619094

**PETROL, MOT
SERVICE, PARTS
ACCESSORIES
NEW & USED
CAR SALES**

**SEE THE NEW
MITSUBISHI COLT AT
OASIS NOW**



APPOINTED DEALERS

HALF TIME CHECK PREMIER LEAGUE

Aston Villa	v	Spurs
Chelsea	v	Everton
Ipswich	v	Sheffield W.
Liverpool	v	Q.P.R.
Man City	v	Coventry
Sheff. Utd	v	Norwich

BARCLAYS LEAGUE DIVISION 1

Derby Co	v	Bristol Rovers
Leicester	v	Sunderland
Newcastle	v	Charlton

BARCLAYS LEAGUE DIVISION 2

Bradford	v	Exeter
Brighton	v	W.B.A.
Huddersfield	v	Fulham
Reading	v	Port Vale
Wigan	v	Preston

COCA COLA CUP SEMI FINAL - 2ND LEG

Arsenal	v	Crystal Pal.
---------	---	--------------

THE OFFICIALS The Referee - J.E. Martin -

Mr. John Martin is married with one son, he lives in Four Marks Nr. Alton in Hampshire and is a commercial accountant.

He commenced refereeing in the Bromley & District League in 1958 moving to Surrey in the Surrey Senior and Isthmain Leagues. He was appointed to the Football League linesmens list in 1973 and onto the referees list in 1976.

With over 15 years experience Mr. Martin has refereed the F. A. Cup Semi-Final Everton v Luton in '85, the Charity Shield Liverpool v Wimbledon in '89, Littlewoods Cup Final Forest v Oldham '90 and Leyland Daf final Birmingham v Tranmere in '91. He has also refereed many European and International matches.

Mr. Martin enjoys all sports, particularly athletics, golf, badminton and bowls.

The Linesmen

Red/Yellow Flag -
Mr. C. N. Breakspear
Yellow Flag -
Mr. S. E. Williams

KNIGHTS FARM SHOP

WINNER OF THE 1992 ORSETT
SHOW FARM SHOP PRODUCE
AWARD.

OPEN 7 DAYS A WEEK
7AM - 6PM
LARGE CAR PARK
FRESHLY PICKED HOME
GROWN PRODUCE

Best Potatoes £1.99 - 56lb
Fresh Picked English Tomatoes 39p lb
28lb Carrots £1.00
10lb Harvest Onions £1.00
7lb Pickling Onions £1.00
Large Savoys 25p each
No. 1 eggs £1.80 a tray
LARGE RANGE OF HOME MADE
JAMS, PICKLES AND CHUTNEYS



0708
556507

South Hall Farm, Wennington Road,
Rainham, Essex

Universal

For value and price –
there's no better bicycle



Available locally from **LEISURETEC**, 815 London Road, Westcliff-on-Sea, Essex SS0 9SY. Tel. 0702 470056
Callers welcome **MONDAY** to **SATURDAY** 9.00 am to 5.30 pm (opposite **CHALKWELL PARK**),
or nationwide from **TOYS 'R' US**, **EMPIRE STORES**, **GREAT UNIVERSAL STORES**,
LITTLEWOODS, **KAYS**, **MARSHALL WARD**, **GRATTAN** and cycle retailers throughout the U.K.

SCHOOLDAYS

I went to Royal Liberty School, Gidea Park, Romford passing 9 G.C.S.E's. I played for SENRAB Sunday League Club in the Echo A Division and whilst playing for them was signed by Norwich City on Schoolboy forms, playing for them for two years. I also played for Essex County Schools and Essex Youth.

FAVOURITE POSITION

I prefer to play Centre midfield, because I enjoy getting through plenty of work and this allows me to get forward and gives the opportunity to score goals. I don't mind playing Centre Half as second choice.

RESERVES & YOUTH TEAMS

I have played most games this season for the reserves scoring one goal against Wokingham - away. My youth side outings this season have resulted in getting five goals and I hope to score a few more before the season ends. Last season I scored 7 goals.

CAREER HIGHLIGHTS

Being told on Saturday last that I had been selected to

A Personal File



NAME:

Jamie Southon

BORN:

30th October 1974

BIRTHPLACE:

Romford

HEIGHT:

5ft 11ins.

WEIGHT:

11st 0lbs

STATUS:

Single

represent the F. A. in a Youth XI next Sunday against a Combined Services Youth XI at Aldershot. Jae Martin is also included in the squad (congratulations Jae). Also being sub at Wolverhampton.

HOME LIFE

I live at home in Hornchurch with my family. I have two

brothers 19 and 15 years of age and a younger sister aged 9. My younger brother used to play football for E.M.H. but no longer is able to play because he broke his leg badly. I enjoy going out with my friends at weekends but during the week I relax when I get home to get over the days training.

LEAGUE DEBUT

I have not made this yet, but I hope it will not be too far off. I had the privilege to be substitute for the league match at Wolverhampton two weeks ago. I have been selected in the squad of 14 three times.

MATCHDAY ROUTINE

For home games I normally get up at 8.30am and have a light breakfast, make my way to the ground. I ensure that I get a good warm up prior to games.

GREATEST INFLUENCE ON CAREER

This has to be Danny Greaves and my father who comes to all my games home and away. He is also my greatest critic.

Passing Back

years **30** ago

We extended our unbeaten run to five games with a 2-1 win at Bristol Rovers on March 16th 1963 with a match-winner from Jimmy Fryatt to follow up the own goal from home defender Doug Hillard that had levelled up Rovers' opening goal from Hugh Ryden, the teams being:

BRISTOL ROVERS: Hall, Hillard, Jones (G), Oldfield, Stone, Mabbutt, Hurford, Biggs, Ryden, Williams, Jones (R).

SOUTHEND: Goy, Costello, Neal, Bentley, Watson, Bradbury, Woodley, Jones, Fryatt, McNeill, McKinven.

Attendance: 7,213.

This win lifted us to sixth place in Division Three with Swindon second a point behind leaders Peterborough after losing 3-2 at home to Port Vale with John Smith getting both goals at a time when their side included Mike Summerbee and Ernie Hunt.

In a fifth round F. A. Cup tie played on the same day Ronnie Moran's penalty took Liverpool through at Highbury and Denis Law opened the scoring in Manchester United's 2-1 win over Chelsea.

years **20** ago

We made it two wins and a draw in three games as we strove to climb out of the relegation zone as we beat Grimsby here 2-0 with an own goal from striker Mike Hickman and a more conventional goal from Kevin Johnson, both in the second half, on March 12th 1973, the teams being:

SOUTHEND: Mackay, Booth, Dyer, Elliott, Albeson, Moody, Johnson K, Ternent, Horsfall, Moore, Taylor.

GRIMSBY: Turner, Campbell, Booth, Czuczman, Wigginton, Gray, Brace, Hickman, Hubbard, Lewis, Gauden (Lynch).

Attendance: 4,813.

We were now eighteenth in Division Three while Swindon were in a similar position in Division Two after a 1-1 draw at Preston where Ray Treacy got their goal which was nullified by one from Alex Bruce, those being the latter days of long serving Peter Downsborough and John Trollope in the Swindon defence.

Fulham's biggest crowd of the season of 21,464 saw them beat Santos 2-1 in a friendly match, the legendary Pele netting the visitors' goal from a penalty as their silky skills did everything but win the game.

Elsewhere there were rumblings about Chelsea's Ron Harris playing in a private game against the British Police while under suspension. It all blew over eventually but for a time the Football Association were not impressed by claims that on a private ground with only police in attendance the game must have been within the law.

years **10** ago

We picked up our third draw in four games when our game at Orient on March 9th 1983 ended 1-1 with both goals coming in the second half as John Linford netting on his debut after being loaned by Ipswich and Keith Houchen replied for the O's, who were in the lower half of the table while we stayed in ninth spot, the teams being:

ORIENT: Day, Cornwell, Peach, Foster, Gray, Sussex, Donn, Price (McNeill), Houchen, Kitchen, Godfrey.

SOUTHEND: Cawston, Stead, Pennyfather, Clark, Hadley, Moody, Pountney, Phillips, Mercer (May), Linford, Nelson.

Attendance: 3,073.

Swindon were again in a similar position to ourselves though this time they were eighth in Division Four after losing their fourth game out of five, this time 3-2 at home to Chester, Andy Rowland and Paul Rideout getting the goals.

Elsewhere in the F. A. Cup quarter finals Arsenal beat Aston Villa 2-0, Manchester United beat Everton 1-0, Sheffield Wednesday and Burnley drew and Brighton reached their first ever semi-final with a Jimmy Case match-winner against Norwich.

Weir House Furniture of Eastwood

Reproduction Furniture - Oak, Mahogany, Yew -
Upholstery & Re-upholstery, Bar Seating etc.

Showroom & Factory: Unit 3, Bentalls Close, Southend on Sea Essex
Telephone: Southend-on-Sea (0702) 603878 Fax: (0702) 390510



Billy Blues Bulletin

HODDLE IS MANAGER OF THE MONTH

Swindon Town boss Glenn Hoddle is the Barclays Bank Division One Manager of the Month for February. Player-Manager Hoddle led his team to four victories in their five Barclays League outings, including wins against promotion rivals Millwall, Portsmouth and Tranmere, to push the Wiltshire side firmly into the Play-Off zone. Hoddle will receive an inscribed plate and a jeroboam of champagne.

BARNSELY OPEN NEW STAND

Having watched its construction since last July, members of the Barnsley public were able to take their seats for the first time in the superb new East Stand at Oakwell for last Saturday's First Division game against Leicester City. And with over 700 season tickets already sold, adult supporters can watch Barclays League action from the upper tier for just seven pounds.

Completed at a cost of £2.5 million with the help of the Football Trust, the new structure provides a massive 7,324 seats, together with twelve executive boxes and five specially designed viewing lounges. The building of the East Stand raises the number of seats in the ground to just under 9,400 with the total capacity at Oakwell now standing at over

27,300.

As well as the improved facilities provided for fans the new East Stand also brought less obvious benefits to the local community with Barnsley insisting that, wherever possible, developers Miller Construction make use of local contractors and suppliers during the building process.

NEW STAND TO DELIVER

The latest stage of redevelopment work at First Division leaders Newcastle United got underway this week with the beginning of work on the new Leazes Grandstand.

Newcastle's Lord Mayor, Councillor Bob Cook, completed the honours with the cutting of the first sod for the construction which the North East giants hope to have finished by the start of next season. The new grandstand, which will boast 11,500 seats, replaces just 4,000 terrace spaces and will double the number of seats presently available at St James' Park.

Russell Cushing, United's General Manager and Secretary, commented: "This latest major project will bring the total spent on ground developments since 1989 to £11 million. We've had the full cooperation of and support from the local council and our joint landlords, the Freeman of the City of Newcastle Upon Tyne, with the new grandstand part of our overall plan to make St James' a 40,000



Photo: David Montier

all-seater stadium."

DREAM TEAM

Third Division leaders Barnet have hit upon an unlikely way of boosting attendances at Underhill in addition to the continuing attraction of top of the table football.

Following the recent decision by Chairman Stan Flashman to place every single first team squad member on the transfer list, no fewer than thirty-four representatives of Barclays League and F. A. Premier League clubs were amongst the crowd for the Bees' home game against Gillingham.

YOUR LAST CHANCE?

There will never be a better time to buy at these prices
FAVORIT HATCHBACKS

from **£4,790** Drive away price



FIVE DOOR HATCHBACKS

FAVORIT

No Tricks -
No Treats -
No Gimmicks

Just a lot more
for a lot less
from SKODA

HIGH SPECIFICATION

ESTATES
Drive Away
Price
£5,590



Fully equipped LUXURY ESTATES
with no other competitors

VANS &
PICK-UPS
FROM ONLY
£3,999..
plus v.a.t. on
the road cost



Or lease from £24.88 per week
(excluding VAT at 17.5% - FOR
BUSINESS USERS ONLY)
The new FREEWAY and the new
FREEWAY PLUS vans. 5 door, for easy
access and the new FOREMAN pick-up
easy to drive, however laden.



NEWTON MOTORS

Area Distributors
Goodmayes Road Ilford, Essex
081 599 2337

FOR SKODA SALES - SERVICE - SPARES IN YOUR AREA

The Forge Garage
Turnpike Cross Roads
Woodham Road
Battlesbridge, Wickford
(0268) 732240

Fortune Auto Sales
36-38 Southend Road
Grays
Essex
0375 379777

Prince Avenue Service
Station
59, Prince Avenue
Southend on Sea
(0702) 332832

Those Were The Days Kevin O'Donnell recalls bygone days

Blues and Swindon are very long-standing opponents indeed. Both clubs were members of the Third Division South throughout its existence and tonight's match is the 92nd meeting in the Football League. The visitors have had much the better of the previous 91 matches, winning 40 to Blues 30, with 21 draws. Swindon have scored 150 goals and Blues 126.

However, meetings between the clubs go back much further than that as Swindon Town Reserves were Blues' first ever opponents in the Southern League Division Two in 1906-7. The match was played at the original Roots Hall ground but the visitors spoiled Blues' day by winning 1-0.

The clubs continued to meet in the Southern League and both were founder members of Division Three of the Football League in 1920. Swindon were the third club Blues met in the newly formed division but lost both games, played within a week of each other. The 1-3 defeat at the Kurşaal was Blues first ever home loss in the League.

However, it is away from home that Blues have suffered most. Their first seven visits to Swindon in the League all ended in defeats and they only managed 2 goals to Swindon's 25. In all their 46 League away matches at Swindon Blues have won only 6 times, the last in April 1955 when Sandy Anderson scored the only goal of the game.

Blues did gain a dramatic victory at the County Ground in the third round of the F. A. Cup in 1968-69. Then Fourth Division Blues had already beaten non-League Kings Lynn 9-0 and Brentwood Town 10-1 in the first two rounds but were very much the underdogs for the third round clash. Swindon were then in Division Three, from which they were to win promotion that

season and they also went on to beat Arsenal in the League Cup Final at Wembley.

Before a stunned crowd of just under 19,000 Billy Best and Chico Hamilton scored for Blues without reply from the home side to dump them unceremoniously out of the Cup.

There have been many high scoring games between the clubs over the years. The 91 League matches played so far have averaged 3 a game. In 1950-51 Blues gained one of their biggest League victories ever over Swindon at the Stadium

Blues had turned that deficit around and led 5-2 and scored another three goals in the second half as they went on to win the match 8-2.

More recently Blues scored an important 3-2 victory at Roots Hall on Boxing Day 1984. Blues were struggling against having to apply for re-election to the League in 1984-85. Goals from Steve Phillips (from a penalty), Glen Pennyfather and Trevor Whymark had given Blues a commanding 3-0 lead but Swindon came back to make it 3-2 and only a tremendous double save in the last minute by keeper Jon O'Brien prevented them from getting a draw. The crowd was only 2,942 but that was the highest at Roots Hall all season.

That scoreline was repeated last season in what was as good a match as I have ever seen at Roots Hall. Brett Angell scored twice for Blues, one an absolute cracker and Steve Tilson got the other as Blues scraped home 3-2.

Earlier this season Blues went down by the same score at the County Ground. In that game it was Blues who trailed 0-3 as the home team simply swept them aside. The match marked the debuts for both Scott Ashenden and Steve Brown and the last game for Blues for Ian Benjamin.

Benjamin pulled one goal back in the first half after good work by Steve Brown and John Cornwell scored late in the game to set up a tense finale but Blues could not get the equaliser.

Swindon have not won at Roots Hall for over 30 years, their last victory being in 1961-62 by 2-0 (that was their 5th win in succession here). Since then in 10 visits Blues have beaten Swindon in 7 and another win today would be a big boost to our survival chances in this season's Division One.



(the programme cover is reproduced herewith).

Blues had already met Swindon twice in that season and lost both times. They went down 1-4 at the County Ground in the League and 0-3 at the Stadium in the First Round of the F. A. Cup. In the return League fixture the game was following the same pattern as the previous two encounters as Blues trailed 0-2 after 14 minutes. However, by half-time

CLUBSHOP

Price List

SOUVENIRS

Key Rings	£0.30
Key Rings with Badge	£0.90
Book Marks	£0.50
Coasters	£0.70
Flat Hats	£2.00
Baby Bibs	£1.30
Baby Body Suits	£3.99
Ski Hats	£3.00
Jacquard Scarves	£4.99
Gloves - Youths & Mens	£1.99
Two Side Scarves (Home & Away)	£5.99
Stickers (Long or Round)	£0.60
Badges (Official)	£1.70
Sew-on-Badge	£1.10
Suit Cover	£4.99
Baseball Hat (Blue)	£3.99
Teddy Bears (small)	£1.99
Beany Hats (Yellow/Blue)	£2.99
Satin Pennant	£2.99
Small Pennant	£1.99
A Kit Badge	£1.99
Holdall (bag)	£6.99
Bumbag	£6.60
Teddy Bear 7"	£7.99
Baseball Hats (Childs) Blue	£2.99
Pencil Cases	£1.99
Door Plates	£1.99
Tie Clips	£8.99
Cuff Links	£14.99
First Day Covers (91/92)	£2.50
Bugs	£0.70
Ties	£11.50
Pens	£0.50
Flags	£2.99
Mini Tankers	£0.75
Mugs in Southend Colours	£2.00
Shell Shorts XL/L/M	£22.99
Southend Blue Bins with Badge	£2.99
Mini Kit Key Rings	£1.99

SHIRTS 1992/93

26/28 30/32	£20.99
34/36 38/40 42/44	£25.99

46/48	£26.99
XL	£27.99

SHORTS 1992/93

Youths	£8.99
M L XL	£9.99

SOCKS 1992/93

2-5 youths	£4.50
6-12 mens	£4.99

PLEASE STATE IF YOU WANT HOME/
BLUE OR AWAY/YELLOW

GOALKEEPERS SHIRTS 92/3

26/28 30/32	£24.99
34/36 M/L	£26.99

SWEATERS

Quartered Rugby S/M/L/XL	£18.99
26/28/30/32/34	£14.99

Sweater with Badge & Name
medium £18.99

Vertical Striped Sweaters XL/L	£18.99
-----------------------------------	--------

Cowlneck Sweaters M/L/XL	£25.99
-----------------------------	--------

New Exclusive Embroidery (Sky/Navy) -
M/L/XL £28.99

Rugby (Two colours) M/L/XL	£18.00
-------------------------------	--------

Drill Top Plain - M	£24.99
---------------------	--------

Run Out Tops Yellow/Blue 26/28 30/32	£21.99
---	--------

M/L/XL	£25.99
--------	--------

Acrylic Sweater 26-32	£11.99
--------------------------	--------

34-46	£14.99
-------	--------

Jogging Trousers 30-32	£11.99
---------------------------	--------

S/M/L/XL	£15.99
----------	--------

T-SHIRTS

Southend The Best Football Team In The World T-Shirts L/XL	£6.99
--	-------

Southend United Pure Genius T-Shirts - L/XL	£6.99
--	-------

If you can't beat them join
S/M/L/XL £6.99

Childrens T-Shirts 24/26/28/30
£4.99

TRACK SUITS

Run Out Track Suit Size 26/28 30/32	£34.99
--	--------

Size S/M/L/XL	£39.99
---------------	--------

Track/Shell Suit Size 26/28 30/32	£59.99
--------------------------------------	--------

Size S/M	£69.99
----------	--------

COATS

Supporters Anorak Size L/Boys/Youths	£39.99
---	--------

Size S/M/L/XL	£49.99
---------------	--------

Supporters Coat Size S/M/L/XL	£59.99
----------------------------------	--------

Manager's Coat Size L/XL	£69.99
-----------------------------	--------

GET THE OTHER BLUES

VIDEOS

1. S.U.F.C. v SPURS
A night to remember in 1989
2. BLUES ON THE MOVE
Season 1990-1992
The goals so far - Part 1 - August to
December
3. THE DREAM REALISED
- SEASON 90-91 December - May -
The promotion story
4. CURRENT SEASON MATCHES
Every game available at £10.50
5. THE BLUES IN TWO
August - December 1991
6. THE BLUES IN TWO
December - May 92
£10.50 each

Please note not all videos are in stock
Prices correct at the time of going to print. We reserve
the right to alter prices without prior notice.

● Door Security

● Mobile Patrols

● Guard Dog Patrol

● Bodyguards & Escorts

● Investigation Work



**BRITANNIC
SECURITY LTD**



SERVICES

● Surveillance & Tracing

● Concert Stewarding

● Consultants

● Chauffeur Driven Security

● Protection Services

● Secure Storage

4, The Chambers, Broadway, Pitsea, Basildon, Essex SS13 3AS Tel: (0268) 550999 Fax: (0268) 557922

S.U.F.C. Info - Line 0839 66 44 43 27

Home And Away

COMING TO ROOTS HALL NEXT

MILLWALL
Barclays League
Division One
Sunday 21st March
Kick off 3.00pm

The Lions will be smarting for revenge after Blues dumped them out of the F. A. Cup at Roots Hall. Blues drew at The Den 1-1 but had several chances to win so there is nothing to fear. However, despite some erratic results the Lions have been playing well this season and are another team whose promotion hopes will have to be dented if Blues are to climb out of trouble at the bottom end of the table.

TRANMERE ROVERS
Barclays League
Division One
Friday 26th March
Kick off 7.45pm

Friday night football returns with the visit of Tranmere. John Aldridge has hit the headlines again this season with his goal scoring feats but all round team play has seen the Birkenhead team to its most successful season ever. Last year the teams drew 1-1 at Roots Hall in a match which will unfortunately be remembered for the wrong reasons. Keith Jones scored with a scorcher to lighten the gloom - let's hope he can repeat it this time around.

BLUES GOING AWAY

BY ROAD

This seasons away travel guides have been kindly donated by
THE A.A. ROUTES PROCESSING CENTRE,
Telephone: 0345 500600

OXFORD UNITED F.C.
13th March 1993

Follow signs London, Chelmsford A127 to leave by Prince Avenue. In 20.3 miles branch left (signs Watford) and at roundabout take 3rd exit to join motorway M25 to junction 21a. Forward (signs Heathrow) to Junction 16. Follow signs Oxford to join M40 to junction

8. Branch left and in 1.1 miles forward to join A40 - HEADINGTON ROUNDABOUT. Take 2nd exit A420 (signs City Centre). In 0.9 miles turn right into Sandfield Road. Shortly turn right again into Beech Road for OXFORD UNITED F.C.

Away supporters section:
Cuckoo Lane Stand.

Total mileage: 106 miles.

BY TRAIN

Routes, times and prices kindly supplied by:

 **Network SouthEast**

OXFORD UNITED

Saturday 13th March - K.O. 3.00pm
Depart:

Take trains from Southend Central @ 10.15am Arrive Fenchurch Street 11.10am

Take trains from Southend Victoria @ 10.00am, Arrive Liverpool Street 10.59am

Take the Circle Line to Paddington, Take the 2.20pm which arrives at Oxford 13.24pm

The Route Home:

Take the 17.15 departure from Oxford to London Paddington (the trains run every hour after that time). Then take underground back to either Liverpool Street/Fenchurch Street where services run to Southend at 20 minute intervals.

Fare:

£17.90 Supersaver (return).

Various discounts are available for Railcard holders.



Roslin
H.O.T.E.L
overlooking the sea

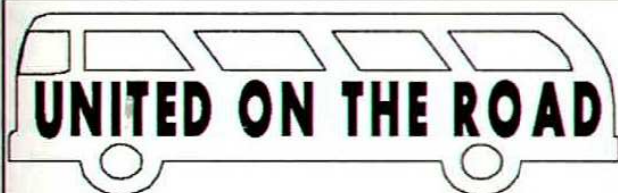


Mulberry Restaurant
Open to Non-Residents
Excellent View across the Estuary
phone (0702) 586375
THORPE ESPLANADE THORPE BAY ESSEX

All rooms with Private Bathroom or Shower, Telephones, Colour Televisions. Tea & Coffee making facilities. - Use of local sports centre for Squash, Tennis, Swimming Pool, etc. - Full Central Heating - Large Car Park - Weddings and Dinner Parties - Continental Terrace - Conference & Small Exhibition Room - Live music Friday & Saturday evenings



SUPPORTERS INFORMATION



A new travel club for Blues supporters, which is non-profit making and whose aim is to arrange cheap travel for Blues fans to away games, there is no membership and travel is by 49 seat executive coach with video and toilet.

Tickets can be purchased for the following games from the Programme Hut in the car park between 2.00pm & 3.00pm and half an hour after each home game.

Oxford United
cost £7.00

depart* Sat 23rd March
at 10.30am.

Bookings taken by telephoning:

0702 335347

Pick Up Points Roots Hall*, Leigh Elms, Tarpots Corner, Pitsea
(Gala Bingo) Basildon (Gala Bingo)

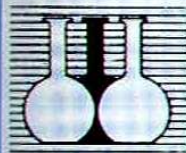
TRAVELLING TO NOTTS CO.

NOTTS CO.

League Division One
Tuesday 23rd March
K.O. 7.45pm

Neil Hook County's Chief Executive has asked us to advise our travelling fans that over the past close season the Meadow Lane ground has had more than a face lift. Three new stands have been built and the facilities, which were as he says "not the best in the English League" are now top quality and worth visiting, with new seating, tea bars and refreshment areas.

Travelling Blues fans views on these new facilities will be published in the West Ham programme.



MIDEL

Consultants and Suppliers of
Quality Cleaning Machines,
Equipment and Materials

Regular deliveries
throughout Essex,
Suffolk, Herts &
London

CLEANING SUPPLIES LTD, 136 Broadway, Leigh on Sea, Essex SS9 1AA
Telephone (0702) 78641

Suppliers of: Bleach & Lavatory Cleaners, Deodorants, Wringers, Wastebins & Dustbins, Sprayers, Floor Cleaners, Disinfectants, Detergents, Degreasers, Metal Cleaners, Floor Seals & Polishes, Carpet Shampoo & Maintenance Furniture Polish, Air Fresheners, Flykillers, Soaps & Hand Products, Scouring Pads & Sponges, Steelwool, Machine Cleaners, Barrier Creams, Soap Dispensers, Cleaning Pads, Ladders, Floor Squeegees, Window Cleaning Cloths & Rags, Dusters & Ceiling Brooms, Sweeping Equipment, Paper Towels, Serviettes, Toilet Papers & Compounds & Oil Granules, Dustmats & Doormats, Electric Fittings, Refuse Sacks, Gloves of all types, Floor Cleaning Lights & Tubes, Brooms, Paint Brushes, Mops, Dust Machines, Floor Polishing Machines, Carpet Cleaning Control Floor Sweepers, Sponge Mops, Buckets & Machines, Vacuum Cleaners wet & dry.

**WE ALSO REPAIR & SERVICE ALL TYPES OF CLEANING MACHINES.
PLEASE PHONE FOR OUR FULL PRICE LIST**



Junior Blues

SPONSORED BY:

**WIMPY &
NEPTUNES**

Hello Junior Blues,

Welcome to Roots Hall this evening. Firstly I must say a big thank you to all our Junior Blues who helped to represent Southend United as our collectors for the Imperial Cancer Research Fund collection on behalf of Bobby Moore, a sad-loss to our sport.

I am sure that you all understand the importance of this particular charity. The money will

be going to help people who are a lot less fortunate than us with their health. Also we mustn't forget to thank the supporters who so generously dug deep into their pockets to fill the buckets. Well done everyone!

Unfortunately I have had to write these notes on the eve of our Junior Blues games against Charlton Junior Reds so the scores will have to follow in the next edition of the match day magazine. I am just completing the details of a trip on the 12th June 1993 to Wembley to watch the England v Germany School-boys International. Anyone who is interested in joining us on this day-trip please ring me on 0702 341351 as soon as possible to avoid any disappointment. I can assure you that it is a brilliant day out. A couple of years ago I took my eldest son's football club up to Wembley for the School-boys International and certainly

was a day to remember. Our trip to Watford F.C. has been a sell out, unfortunately I have now had to close the register.

Remember that the Southend United F.C. Information Line is updated every Monday morning and all information regarding the Junior Blues will be on this line. Please remember that you must ask your parents before using this service. The telephone number is on the bottom of this page.

That's all for now, be good and safe.

Happy Birthday to:

Colin Morris	8.3.83
Nikki Possfield	9.3.83
Allon Ali	9.3.78
Jordan Moss	10.3.85
Paul Souter	19.3.85

Southend United's Information Line Number is 0839 66 44 43 please note that calls cost 36p per minute peak rate and 48p per minute at all other times.

NEPTUNES Restaurant

40 Marine Parade Southend-on-Sea

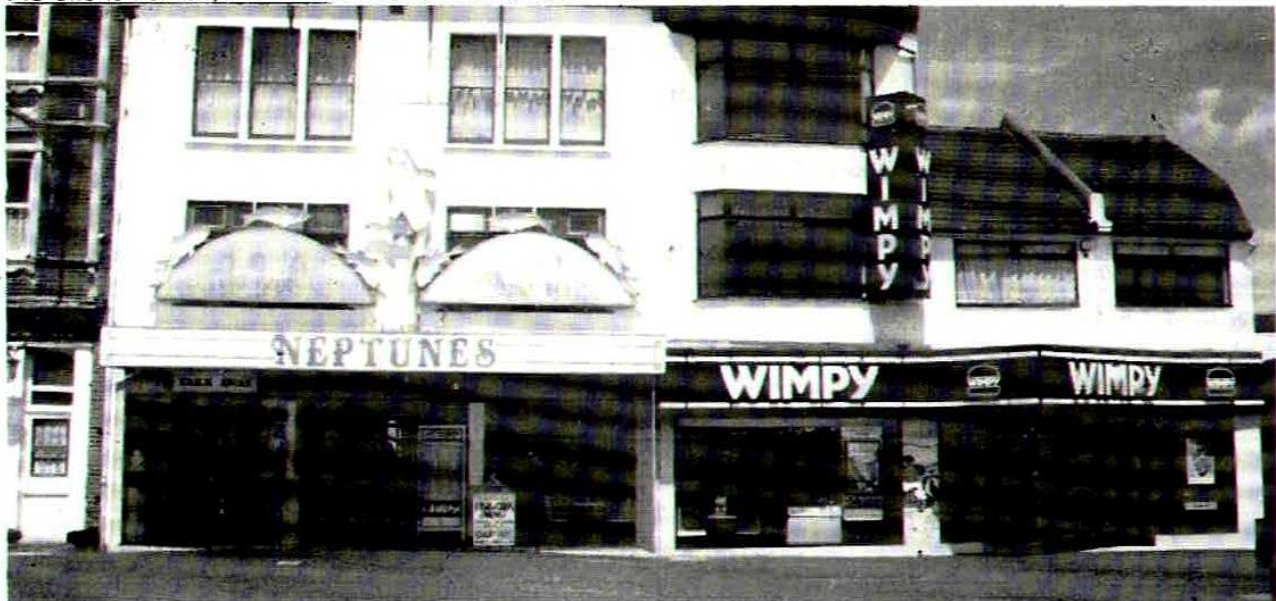
Tel: (0702) 464466

- No one is Perfect, But we are nearer than others -

The Wimpy

41/2 Marine Parade Southend-on-Sea

Tel: (0702) 611968



"Buxton Says" Roger Buxton of Breeze A.M. puts pen to paper

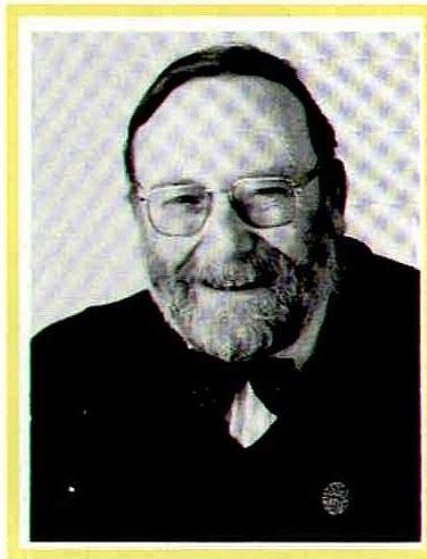
Enthusiasm makes the difference. This was the title of one of the "pick me up" best sellers by that heartwarming American author ... Rev. Norman Vincent Peale.

Now with the Blues in trouble at the wrong end of the First Division it's time for us to add our enthusiasm to their cause by cheering them to the rafters tonight as we take on Swindon Town.

Despite our lowly position the lads have shown in recent weeks they are capable of living with the best. The home draw with Newcastle United, the cup win over Millwall, the stout performance in losing 2-0 at mighty Sheffield Wednesday in the F. A. Cup are proof that the quality is there.

However as we all know only too well the line between success and failure is very thin indeed and tonight points are priceless in our fight for First Division survival. I say our fight because as supporters we are part of the club and there's no doubt that our cheers and encouragement will help to literally lift the team up the table.

Swindon Town on the other hand come to Roots Hall on the crest of a wave. Third in the table and aiming for the Premier League, they may even include former Blues star Martin Ling in their line up ... and how good it is to see him back to his best after that terrifying injury at



Wrexham a few years back when he was left with a fractured skull and even his life in danger for a while.

I don't have to tell you that they are managed by Glenn Hoddle. He and Gilbey's Gin are the finest exports from Harlow and it's also good to see such a Maestro of a player showing similar

influence in management. Indeed he has just received the Barclays Award for being the Manager of the Month for the First Division for February ... quite a feat in itself as Barclays don't give anything away these days.

It's very sad that Harlow no longer has a football club. It's not so long ago that the Diadora side was knocking us and Leicester City out of the F. A. Cup ... but now they have gone to the wall. Earlier this season they fell heavily between two stalls. Their ground at the Sports Centre did not come up to Diadora League standards and they ran out of cash trying to build a new ground ... went broke and went out of business.

Ground standards are all very well but it does seem that Football some times cuts off its nose to spite its face. This could be the case this week when following Sunday's pitch invasion at Manchester City against Glenn Hoddle's old club Spurs. There are now calls to bring back barriers, and that I find really frightening. It was only a minority who ran onto Maine Road. To bring back barriers and the chance of another Hillsborough is too big a risk to contemplate.

The vast majority of spectators at Sunday's cup tie enjoyed and did not interfere in any way with a cracking match ...

Let's hope we witness another cracker tonight.

SUPREME HOLIDAYS

Your Guarantee

- Fully Bonded Holidays
- Established for over 65 Years
- Supreme Supercoaches
- 1000's of satisfied customers
- Local Joining Points
- Guaranteed against all currency Surcharges
- Contractors to Southend United F.C.
- Member of A.B.T.A.



FREE COLOUR BROCHURE UPON REQUEST

303 London Road, Hadleigh, Benfleet, Essex SS72BN

Tel: 0702 552995



ABTA 57511

The A-2-Z of S.U.F.C. By Dave Goody

R IS FOR RELATIONS

There have been 3 pairs of brothers that have made first-team appearances for Southend United since their entrance to the Football League in 1920.

Bertram and Emlyn Jones	Played together in only one game in 1934, Emlyn finishing his career with 236 appearances for the Blues and 30 goals. Bertram played just the 1 game.
Edward and Stan Mather	Both signed from the Bolton League, they played together in the final 2 games of the first season, 1920/21. Edward had made one other appearance, but a total of 5 games between them was not added to. Edward also scored 1 goal.
Bob and Dave Worthington	14 of Bob's appearances were with brother Dave, but Dave ended up with 107 appearances for the Blues against Bob's 23, but Bob managed 1 goal, something that Dave did not.

Some of the older players, ones who made appearances in the 1920's and 1930's may have been related; unfortunately their birth details are so difficult to get hold of that I have been unable to prove conclusively whether this is the case or not.

There have also been relations of some famous players who have made appearances for the Blues.

Danny Greaves	Son of the great goal scorer Jimmy. Danny played 53 games between 1981 and 1984, scoring 14 goals.
Alan Little	Alan's brother Brian made 1 appearance for England during his career. Alan's career took in 7 different clubs, his most appearances being 118 for Southend. He also contributed 13 goals.
Jimmy Shankly	Jimmy's fantastic career record with Southend (152 appearances, 100 goals) was to be overshadowed by the achievements of his brother Bill who took Liverpool to many domestic and European successes.
Peter Watson	Although both centre-halves, Peter's brother Dave had a more successful career, playing 65 times for England. Peter retired through injury after making 263 appearances and scoring 3 goals for the Blues.
Graham Wilkins	Graham's 4 appearances for the Blues while on loan from Brentford in 1984 have been overshadowed by brother Ray's 72 England caps.
Bob and Dave Worthington	Brother Frank played only 8 times for England, but will always be remembered as one of football's great entertainers.

COLLINSON FENCING CO LTD

INDUSTRIAL & FACTORY SECURITY FENCING & GATES
LARCH LAP, CHAIN LINK, CLOSE BOARD, RANCH TYPE -
IN FACT, ANY TYPE OF GARDEN FENCING
CHAIN LINK, CONCRETE, PALISADE & PANEL FENCING
MAIN CONTRACTORS TO BRITISH RAIL,
HM GOVERNMENT & LOCAL COUNCILS

"DISCOUNT AVAILABLE TO CLIENTS WHO PRODUCE THIS ADVERT"

STANNETTS, HIGH ROAD, LAINDON, BASILDON, ESSEX

Basildon (0268) 411671/414218

QUICK. START A FAMILY.



The new Mazda 626. The first exciting family car.

Here are two new additions that would stand out at any family gathering. The latest from Mazda, these new 626 models offer more to both passengers and drivers.

Within the long, wide wheelbase, five passengers and their luggage are cosseted in a 4-door saloon or 5-door hatchback. Clean, uncluttered lines cleave the air smoothly and provide a stunning on-road presence. There are three all-new engines, 1.8i and 2.0i DOHC quad-cam V6 providing a power that's matched by precise and responsive handling.

Equipment fitted on the 2.0i and 2.5i models includes ABS brakes, electric windows and sunroof, heated electric outer mirrors, central door locking and six speaker stereo. The package is topped off by a full 3 year warranty and European

roadside assistance.

If you would like to add distinction to your everyday family motoring, the 626 is the car for you. Take a test drive and believe!

westleigh
MAZDA

Westleigh Motors Ltd
1355/69 London Road
Leigh-on-Sea
Essex

Telephone:
(0702) 72277

B L U E S

STATS

1992/93 RESULTS

- LEAGUE TABLE
- ATTENDANCES
- APPEARANCES
- GOALSCORERS

OPPONENTS

RES POS Pts ATT

15th Aug	Newcastle United (a)	2-3	0	28,545	SANSOME	CORNWELL	POWER	JONES	SCULLY	RIOX	ANSAH	LOCKE	MARTIN	BENJAMIN	SUSSEX	TILSON	O'CALLAGHAN
22nd Aug	FITZBOROUGH (h)	0-1	0	4,651	SANSOME	CORNWELL	POWER	JONES	SCULLY	RIOX	ANSAH	MARTIN	SUSSEX	BENJAMIN	LOCKE	TILSON	O'CALLAGHAN
29th Aug	Sheff Wed (a)	1-2	23	6,431	SANSOME	CORNWELL	POWER	JONES	SCULLY	RIOX	ANSAH	MARTIN	SUSSEX	BENJAMIN	LOCKE	TILSON	O'CALLAGHAN
1-4 Sept	Hull Kingston City (a)	0-2	23	8,337	SANSOME	EDWARDS	POWER	CORNWELL	SCULLY	RIOX	ANSAH	MARTIN	LOCKE	BENJAMIN	LOCKE	TILSON	O'CALLAGHAN
5th Sept	HECSTICR CITY (h)	3-1	21	5,119	SANSOME	EDWARDS	POWER	CORNWELL	SCULLY	RIOX	ANSAH	MARTIN	LOCKE	BENJAMIN	LOCKE	TILSON	O'CALLAGHAN
12th Sept	Burton City (a)	1-0	21	9,515	SANSOME	EDWARDS	POWER	CORNWELL	SCULLY	RIOX	ANSAH	MARTIN	LOCKE	BENJAMIN	LOCKE	TILSON	O'CALLAGHAN
16th Sept	Barnet Town (A) Cup	0-3	18	3,007	SANSOME	EDWARDS	POWER	CORNWELL	SCULLY	RIOX	ANSAH	MARTIN	LOCKE	BENJAMIN	LOCKE	TILSON	O'CALLAGHAN
18th Sept	FORTSMOUTH (h)	0-0	19	5,637	SANSOME	EDWARDS	POWER	CORNWELL	SCULLY	RIOX	ANSAH	MARTIN	LOCKE	BENJAMIN	LOCKE	TILSON	O'CALLAGHAN
23rd Sept	HEBURY Co. F.C. Cup 2 (h)	1-0	20	2,497	SANSOME	EDWARDS	POWER	CORNWELL	SCULLY	RIOX	ANSAH	MARTIN	LOCKE	BENJAMIN	LOCKE	TILSON	O'CALLAGHAN
26th Sept	Derby County (a)	0-2	20	15,192	SANSOME	EDWARDS	POWER	CORNWELL	SCULLY	RIOX	ANSAH	MARTIN	LOCKE	BENJAMIN	LOCKE	TILSON	O'CALLAGHAN
3rd Oct	West Ham (A) Cup (h)	0-3	20	6,482	SANSOME	EDWARDS	POWER	CORNWELL	SCULLY	RIOX	ANSAH	MARTIN	LOCKE	BENJAMIN	LOCKE	TILSON	O'CALLAGHAN
7th Oct	Derby Co. F.C. Cup 2 (2)	1-1	20	6,399	SANSOME	EDWARDS	POWER	CORNWELL	SCULLY	RIOX	ANSAH	MARTIN	LOCKE	BENJAMIN	LOCKE	TILSON	O'CALLAGHAN
10th Oct	WOLVES (h)	1-1	20	5,498	SANSOME	EDWARDS	POWER	CORNWELL	SCULLY	RIOX	ANSAH	MARTIN	LOCKE	BENJAMIN	LOCKE	TILSON	O'CALLAGHAN
17th Oct	Gainsborough Town (a)	0-1	21	4,117	SANSOME	EDWARDS	POWER	CORNWELL	SCULLY	RIOX	ANSAH	MARTIN	LOCKE	BENJAMIN	LOCKE	TILSON	O'CALLAGHAN
25th Oct	CAMBRIDGE UNITED (h)	1-1	21	3,810	SANSOME	EDWARDS	POWER	CORNWELL	SCULLY	RIOX	ANSAH	MARTIN	LOCKE	BENJAMIN	LOCKE	TILSON	O'CALLAGHAN
31st Oct	Sheff Town (a)	2-2	23	7,256	SANSOME	EDWARDS	POWER	CORNWELL	SCULLY	RIOX	ANSAH	MARTIN	LOCKE	BENJAMIN	LOCKE	TILSON	O'CALLAGHAN
7th Nov	Sheff Wed (a)	0-3	23	5,870	SANSOME	EDWARDS	POWER	CORNWELL	SCULLY	RIOX	ANSAH	MARTIN	LOCKE	BENJAMIN	LOCKE	TILSON	O'CALLAGHAN
14th Nov	Sheff Wed (a)	0-3	23	3,330	SANSOME	EDWARDS	POWER	CORNWELL	SCULLY	RIOX	ANSAH	MARTIN	LOCKE	BENJAMIN	LOCKE	TILSON	O'CALLAGHAN
21st Nov	Sheff Wed (a)	2-3	23	7,277	SANSOME	EDWARDS	POWER	CORNWELL	SCULLY	RIOX	ANSAH	MARTIN	LOCKE	BENJAMIN	LOCKE	TILSON	O'CALLAGHAN
28th Nov	Sheff Wed (a)	0-1	23	4,564	SANSOME	EDWARDS	HYSDOP	CORNWELL	SCULLY	RIOX	ANSAH	MARTIN	LOCKE	BENJAMIN	LOCKE	TILSON	O'CALLAGHAN
5th Dec	MILWALL (a)	1-1	23	15,874	SANSOME	EDWARDS	POWER	CORNWELL	SCULLY	RIOX	ANSAH	MARTIN	LOCKE	BENJAMIN	LOCKE	TILSON	O'CALLAGHAN
12th Dec	West Ham (a)	0-2	24	15	SANSOME	EDWARDS	POWER	CORNWELL	SCULLY	RIOX	ANSAH	MARTIN	LOCKE	BENJAMIN	LOCKE	TILSON	O'CALLAGHAN
19th Dec	BANSTLEY (h)	3-2	24	3,692	SANSOME	EDWARDS	POWER	CORNWELL	SCULLY	RIOX	ANSAH	MARTIN	LOCKE	BENJAMIN	LOCKE	TILSON	O'CALLAGHAN
26th Dec	WATFORD (h)	1-0	18	5,769	SANSOME	EDWARDS	POWER	CORNWELL	SCULLY	RIOX	ANSAH	MARTIN	LOCKE	BENJAMIN	LOCKE	TILSON	O'CALLAGHAN
28th Dec	Burton Town (a)	2-0	21	7,707	SANSOME	EDWARDS	POWER	CORNWELL	SCULLY	RIOX	ANSAH	MARTIN	LOCKE	BENJAMIN	LOCKE	TILSON	O'CALLAGHAN
9th Jan	Sheff Wed (a)	0-2	23	9,717	SANSOME	EDWARDS	POWER	CORNWELL	SCULLY	RIOX	ANSAH	MARTIN	LOCKE	BENJAMIN	LOCKE	TILSON	O'CALLAGHAN
13th Jan	MILWALL F.A. Cup 2 (h)	1-0	22	8,078	SANSOME	EDWARDS	POWER	CORNWELL	SCULLY	RIOX	ANSAH	MARTIN	LOCKE	BENJAMIN	LOCKE	TILSON	O'CALLAGHAN
16th Jan	DERBY COUNTY (h)	0-0	23	4,243	SANSOME	EDWARDS	POWER	CORNWELL	SCULLY	RIOX	ANSAH	MARTIN	LOCKE	BENJAMIN	LOCKE	TILSON	O'CALLAGHAN
20th Jan	NEWCASTLE UNITED (h)	1-1	22	8,246	SANSOME	EDWARDS	POWER	CORNWELL	SCULLY	RIOX	ANSAH	MARTIN	LOCKE	BENJAMIN	LOCKE	TILSON	O'CALLAGHAN
23rd Jan	Huddersfield F.A. Cup (a)	2-1	22	7,061	SANSOME	EDWARDS	POWER	CORNWELL	SCULLY	RIOX	ANSAH	MARTIN	LOCKE	BENJAMIN	LOCKE	TILSON	O'CALLAGHAN
27th Jan	BIRMINGHAM CITY (h)	4-0	21	4,965	SANSOME	EDWARDS	POWER	CORNWELL	SCULLY	RIOX	ANSAH	MARTIN	LOCKE	BENJAMIN	LOCKE	TILSON	O'CALLAGHAN
30th Jan	Huddersfield (a)	0-1	22	6,180	SANSOME	EDWARDS	POWER	CORNWELL	SCULLY	RIOX	ANSAH	MARTIN	LOCKE	BENJAMIN	LOCKE	TILSON	O'CALLAGHAN
10th Feb	BURTON CITY (h)	1-1	23	3,833	SANSOME	EDWARDS	HYSDOP	CORNWELL	SCULLY	RIOX	ANSAH	MARTIN	LOCKE	BENJAMIN	LOCKE	TILSON	O'CALLAGHAN
13th Feb	Sheff Wed F.A. Cup (h)	0-2	22	26,446	SANSOME	EDWARDS	POWER	CORNWELL	SCULLY	RIOX	ANSAH	MARTIN	LOCKE	BENJAMIN	LOCKE	TILSON	O'CALLAGHAN
21st Feb	BURTON (h)	3-0	22	4,138	SANSOME	EDWARDS	POWER	CORNWELL	SCULLY	RIOX	ANSAH	MARTIN	LOCKE	BENJAMIN	LOCKE	TILSON	O'CALLAGHAN
27th Feb	Wolves (a)	1-1	22	11,563	SANSOME	EDWARDS	POWER	CORNWELL	SCULLY	RIOX	ANSAH	MARTIN	LOCKE	BENJAMIN	LOCKE	TILSON	O'CALLAGHAN
6th Mar	SWANSEA TOWN (h)	0-2	23	5,804	SANSOME	EDWARDS	POWER	CORNWELL	SCULLY	RIOX	ANSAH	MARTIN	LOCKE	BENJAMIN	LOCKE	TILSON	O'CALLAGHAN
12th Mar	Oxford (a)	0-1	23	0	SANSOME	EDWARDS	POWER	CORNWELL	SCULLY	RIOX	ANSAH	MARTIN	LOCKE	BENJAMIN	LOCKE	TILSON	O'CALLAGHAN
20th Mar	MILWALL (h)	0-0	23	0	SANSOME	EDWARDS	POWER	CORNWELL	SCULLY	RIOX	ANSAH	MARTIN	LOCKE	BENJAMIN	LOCKE	TILSON	O'CALLAGHAN
22nd Mar	North County (a)	0-1	22	0	SANSOME	EDWARDS	POWER	CORNWELL	SCULLY	RIOX	ANSAH	MARTIN	LOCKE	BENJAMIN	LOCKE	TILSON	O'CALLAGHAN
25th Mar	TRAWLEE KOVES (h)	0-1	22	0	SANSOME	EDWARDS	POWER	CORNWELL	SCULLY	RIOX	ANSAH	MARTIN	LOCKE	BENJAMIN	LOCKE	TILSON	O'CALLAGHAN
3rd Apr	Sheff Wed (a)	0-1	23	0	SANSOME	EDWARDS	POWER	CORNWELL	SCULLY	RIOX	ANSAH	MARTIN	LOCKE	BENJAMIN	LOCKE	TILSON	O'CALLAGHAN
7th Apr	WEST HAM (a)	0-1	23	0	SANSOME	EDWARDS	POWER	CORNWELL	SCULLY	RIOX	ANSAH	MARTIN	LOCKE	BENJAMIN	LOCKE	TILSON	O'CALLAGHAN
10th Apr	Walsall (a)	0-1	23	0	SANSOME	EDWARDS	POWER	CORNWELL	SCULLY	RIOX	ANSAH	MARTIN	LOCKE	BENJAMIN	LOCKE	TILSON	O'CALLAGHAN
14th Apr	BURTON KOVES (h)	0-1	23	0	SANSOME	EDWARDS	POWER	CORNWELL	SCULLY	RIOX	ANSAH	MARTIN	LOCKE	BENJAMIN	LOCKE	TILSON	O'CALLAGHAN
17th Apr	Barnley (a)	0-1	23	0	SANSOME	EDWARDS	POWER	CORNWELL	SCULLY	RIOX	ANSAH	MARTIN	LOCKE	BENJAMIN	LOCKE	TILSON	O'CALLAGHAN
20th Apr	Sheff Wed (a)	0-1	23	0	SANSOME	EDWARDS	POWER	CORNWELL	SCULLY	RIOX	ANSAH	MARTIN	LOCKE	BENJAMIN	LOCKE	TILSON	O'CALLAGHAN
23rd Apr	GEMSBY TOWN (h)	0-1	23	0	SANSOME	EDWARDS	POWER	CORNWELL	SCULLY	RIOX	ANSAH	MARTIN	LOCKE	BENJAMIN	LOCKE	TILSON	O'CALLAGHAN
1st May	Cardiff City (a)	0-1	23	0	SANSOME	EDWARDS	POWER	CORNWELL	SCULLY	RIOX	ANSAH	MARTIN	LOCKE	BENJAMIN	LOCKE	TILSON	O'CALLAGHAN
8th May	UTON TOWN (h)	0-1	23	0	SANSOME	EDWARDS	POWER	CORNWELL	SCULLY	RIOX	ANSAH	MARTIN	LOCKE	BENJAMIN	LOCKE	TILSON	O'CALLAGHAN
15th May	F.A. Cup Final	0-2	23	0	SANSOME	EDWARDS	POWER	CORNWELL	SCULLY	RIOX	ANSAH	MARTIN	LOCKE	BENJAMIN	LOCKE	TILSON	O'CALLAGHAN

ANSWERS FROM PAGE 14

HALF TIME QUIZ

- 'You'll Never Walk Alone'
- Barcelona
- 1970
- Steve Coppell
- Perry Suckling
- Holland and Sweden
- Spurs and Nottingham Forest
- Bruce Rioch
- Alan Melnally
- Wolves

CROSSWORD

- ACROSS:
- MINSTERMEN
 - NORWAY
 - ADRE
 - ALBION
 - CREWE
 - JAN
 - LEAD
 - GIEBE
 - OUTSIDE
 - ROCHDALE
 - PAT
 - ASA
 - BECKENBAUER
 - MATTHEWS
 - ITALIAN
- DOWN:
- MARINER
 - THE DEN
 - ROCHDALE
 - PAT
 - JENNINGS
 - BECKENBAUER
 - AS ROMA
 - MATTHEWS
 - ITALIAN

BARCLAYS LEAGUE DIVISION ONE 1992-93

Club	P	W	D	L	F	A	W	D	L	F	A	Pts
Newcastle United	33	11	4	1	34	9	10	3	4	26	18	70
West Ham	33	10	4	2	33	13	8	5	4	26	17	63
Swindon	32	11	4	2	33	17	5	4	6	23	24	56
Portsmouth	33	12	2	1	32	8	3	7	7	24	31	54
Millwall	33	11	4	1	41	15	3	8	6	12	20	54
Tranmere	31	10	4	2	35	14	5	2	8	18	28	51
Leicester	32	8	4	4	25	19	6	3	7	20	23	49
Grimby	31	7	5	3	27	21	6	1	8	20	20	48
Charlton	33	8	5	3	22	15	5	4	7	17	17	47
Derby	32	5	1	10	25	27	8	5	3	25	14	45
Wolves	33	7	6	4	27	20	4	5	7	17	22	44
Walford	33	5	5	6	23	27	6	4	7	26	32	42
Peterborough	30	3	7	5	20	22	8	1	6	20	22	41
Barnsley	32	5	3	5	19	14	4	4	9	23	26	40
Oxford United	32	5	6	5	23	15	4	6	6	18	24	39
Sunderland	31	6	5	6	21	19	4	4	6	10	20	39
Brentford	33	6	3	8	22	23	4	4	8	18	28	37
Cambridge United	32	6	4	6	19	21	2	8	6	16	28	36
Notts Co.	32	6	5	5	22	18	2	6	8	19	34	35
Luton	32	3	9	4	17	23	4	5	7	17	26	35
Bristol City	32	5	5	5	19	21	3	4	10	17	37	33
Birmingham	32	7	2	6	19	22	1	6	10	10	31	32
Southend	32	5	6	5	21	15	2	4	10	13	26	31
Bristol Rovers	33	5	2	10	21	34	3	4	9	17	32	30

Southend United's 39th Sportsmans Dinner

An evening with
Geoff Miller

Former England Derbyshire & Essex Cricketer

on Monday 19th April
at Roots Hall

Reception 7.15pm for 8.00pm
Tickets £30.00 + V.A.T. each

Tel: John Carter/Harry Stobart
Dress Black tie

CALLING ALL PROGRAMME COLLECTORS

Lee Venus has 1,000 Southend United programmes for sale. Send your 'Wanted' list enclosing a s.a.e. to:
47 Preston Road,
Westcliff-on-Sea
Essex SSO 7ND

MATCH BALL SPONSORS

Club	Date	Sponsor
Peterborough	22nd Aug	Ted Parsons
Leicester City	5th Sept.	All Jay Plastics
Portsmouth	18th Sept.	Peter Kingsnorth
Derby County	23rd Sept.	Amy Careers
Wolverhampton	10th Oct.	Barnes & Taylor
Cambridge Utd.	25th Oct.	Booth White
Oxford Utd.	7th Nov.	News of the World
Notts. County	21st Nov	Roctford Mouldings Ltd
Sunderland	28th Nov.	Rickard Keen
Barnsley	19th Dec.	Bill Kelleway
Walford	26th Dec.	Cooper Lingard Solicitors
Derby	16th Jan.	Noel Kelleway
Newcastle	20th Jan.	Goldwyns Accountants
Birmingham	27th Jan.	Grashopper (Hort.)
Bristol City	10th Feb.	TRAY Night Club
Brentford	21st Feb.	United Marine & General Salvage
Charlton	6th Mar.	Road House Diner
Swindon	10th Mar.	Royal Bank of Scotland Plc
Millwall	20th May	Davies & Co
Tranmere	26th Mar.	Richardsons Cycles
West Ham	7th Apr.	
Bristol Rovers	14th Apr	
Grimsey	23rd Apr	
Luton	8th May	Ben Jay Autos

CLIFFS

Pavilion
SOUTHEND-ON-SEA

Sunday 7th March IN THE MOOD
Wednesday 10th March BRIAN CONLEY
Thursday 11th March
GIANTS OF PHILADELPHIA
Sunday 14th March
THE DON LUSHER BAND
Tuesday 16th March FOSTER & ALLEN
Wednesday 17th March THE HOLLIES

Thursday 18th March
SOLID SILVER 60's SHOW

Friday 19th March ELKIE BROOKS
Monday 22nd to Saturday 27th March
Southend Operatic and Dramatic Society
CAMELOT

Tuesday 30th March BRENDA LEE
Box Office
0702 351135
Monday to Saturday 10am to 8pm

FOR THE VERY LATEST NEWS FROM ROOTS HALL 0839 66 44 44
THIS SEASON RING SOCCERLINE ON AVAILABLE FROM ANYWHERE IN THE U.K. - 7 DAYS A WEEK - 52 WEEKS A YEAR

Calls cost 36p/min
cheap, 48p/min at
all other times.

SOUTHEND UNITED

MANAGER: COLIN MURPHY

- 1. **PAUL SANSOME**
- 2. **ANDY EDWARDS**
- 3. **CHRIS POWELL**
- 4. **JOHN CORNWELL**
- 5. **PAT SCULLY**
- 6. **SPENCER PRIOR**
- 7. **ANDY ANSAH**
- 8. **DAVE MARTIN**
- 9. **KEITH JONES**
- 10. **STAN COLLYMORE**
- 11. **BRETT ANGELL**
- 12. **STEVE TILSON**
- 14. **ANDY SUSSEX**

BLUES AT HOME
MILLWALL
(League Div. One)
Sunday 21st March
K.O. 3.00pm
TRANMERE
(League Div. One)
Friday 26th March
K.O. 7.45pm

MATCH OFFICIALS

Referee:
J. E. Martin
Linesmen:
C. N. Breakspear
(Yellow & Red)
S. E. Williams
(Yellow)

SWINDON TOWN

MANAGER: GLEN HODDLE

- 1. **FRASER DIGBY**
- 2. **DAVID KERSLAKE**
- 3. **PAUL BODIN**
- 4. **GLEN HODDLE**
- 5. **COLIN CALDERWOOD**
- 6. **SHAUN TAYLOR**
- 7. **NICKY SUMMERBEE**
- 8. **ROSS MacLAREN**
- 9. **DAVID MITCHELL**
- 10. **MARTIN LING**
- 11. **STEVE WHITE**
- 12. **SHAUN CLOSE**
- 14. **EDWIN MURRAY**

**MITRE
MATCHBALL
SPONSOR
ROYAL BANK OF
SCOTLAND**